



LIFE  TM
FLOOR
Lookbook 2017

It's time to **get on board**
with Life Floor!

What's inside our 2017 Lookbook?

What's New

Message from Jonathan Keller, p 3; Kelly Ogle Safety Award, p 5; Splash Pad Safety Initiative, p 7; New and Improved Slate, p 9; Carnival Cruise Line, p 11; Great Wolf Lodge, p 19; Florida Aquarium, p 23

Design with Life Floor

Design with Color, p 31; Color Collection, p 33; Texture Collection, p 35; Tile Thickness, p 37; Installation Patterns, p 39; Installation Concepts, p 45

Life Floor In Your Facility

Pool Decks, p 53; Splash Pads, p 69; Other Applications, p 73

Technical Support:

What is Life Floor, p 89; FAQs, p 95; Technical Data, p 105

People love to walk* on Life Floor.

We believe that safety happens by design. That's why we created the ideal surface for aquatics, with industry-leading traction, comfort, durability, and with infinite design possibilities.

All over the world, people trust Life Floor to make their aquatic environments look and feel extraordinary.

*While on Life Floor, people also love to run, jump, roll, somersault, dance, dip, cha-cha, skip, saunter, sashay, amble, wiggle, twist, twirl, whirl, or just sit and relax.



It's time to get on board.

A message from Life Floor CEO Jonathan Keller

2016 has been an important year for Life Floor. We've completed a number of beautiful installations around the world, deepened many significant relationships, and met amazing new partners on our mission to make aquatic areas safer.

This fall, we were incredibly gratified to receive the Kelly Ogle Memorial Safety Award, given by the World Water Park Association (p 5). As we're most proud of our safety track record, it's an honor to have our success acknowledged by the WWA. The truth is, we may never learn the precise number of injuries we've prevented. But it doesn't matter. We know we're preventing them, which means kids and adults can focus on doing what they come to waterparks and splash pads to do: have fun.

As part of our commitment to safety leadership, we've also started working with the NSF/ANSI Standard 50 joint committee to create a new draft standard for splash pad surfacing (p 7). I was especially honored to be asked to chair the task group that will create the draft. Of course, if you have any ideas, comments, or stories about splash pad surfacing safety, our team is always happy to hear from you.

The best part of my job is making millions of people's lives safer. We know that wherever people are using Life Floor, it has reduced injuries for that area, for that park, and for that community. More and more brands, including Carnival Cruise Line, Great Wolf Lodge, LEGOLAND, and Jumeirah's Wild Wadi are starting to catch on. We think it's time for you to get on board, too.

On behalf of the Life Floor team,

Jonathan Keller

This summer, we set sail on Carnival Imagination to see what guests thought of the newly refit Carnival WaterWorks with Life Floor. See page 11 for more from our cruise, and to learn how we're partnering with Carnival for some of the safest fun at sea.





LIFE  TM
FLOOR



Get on board with

Award-Winning SAFETY

It's official. Life Floor is the first and only surfacing company in World Waterpark Association history to win the prestigious Kelly Ogle Memorial Safety Award!

Each year, the Kelly Ogle Memorial Safety Award is given to an individual or organization for significant contributions to guest and employee safety in the water attractions industry. Nominees are voted on by the board of the World Waterpark Association.



Get on board with...
Safety Leadership

In the past 25 years, splash pads have grown from a niche feature to a nearly half-billion dollar industry, while safety regulations surrounding them have yet to catch up. That's about to change.

Since Life Floor's founding, we've had a dream of changing aquatic recreation for the better. This summer, we took that dream to the NSF* with a proposal to create a safety standard for splash pad surfacing.

What's Next?

A task group, chaired by our CEO, Jonathan Keller, has been formed by NSF/ANSI Standard 50 joint committee with the mission of making a draft standard for aquatic safety surfacing. As the group gets started, we're soliciting as much feedback as we can. If you have any thoughts, questions, or comments about this important effort, please reach out to us by emailing splashpadsafety@lifefloor.com.

* NSF International is an accredited, independent third-party certification body that tests and certifies products to verify that they meet public health and safety standards. Products that meet these standards bear the NSF mark.

Download the White Paper!

Find the report we presented to the NSF/ANSI Standard 50 joint committee to help begin the process of bringing splash pad safety into the 21st century at lifefloor.com/splashpadsafety.

We hope you'll read it and join us in securing a safer future for the families and communities that rely on their local splash pad for summer fun.



Get on board with....

Innovative Design

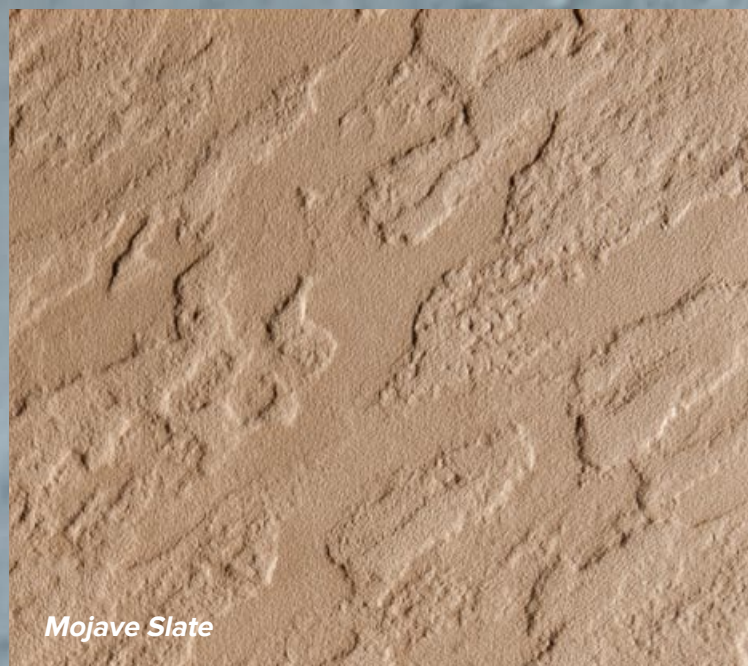
Kestrel Slate

Introducing our improved Slate texture. Same natural style, now featuring MicroTread™ for even better slip-resistance.

**Designed in Minnesota,
manufactured in South Dakota,
100% USA.**

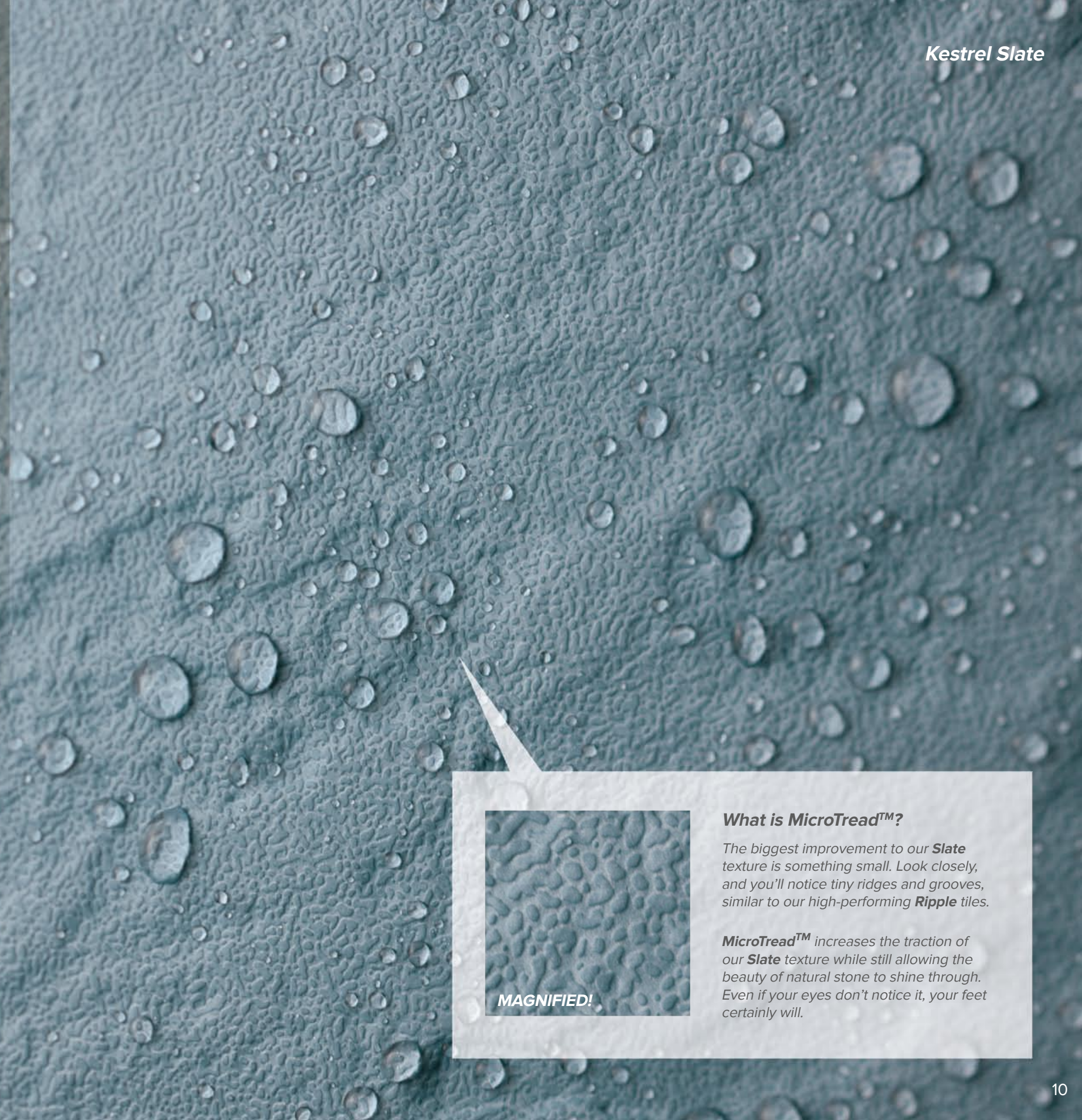
We're serious about great design. We knew we could make our popular Slate tiles even better with a crisper stone texture and greater traction.

To do it, we developed an entirely new mold by laser-scanning actual stone. Scanning at greater than 100%, we were able to better preserve the look of real slate. Finally, the best parts of each sample were digitally combined to create the best performing Life Floor Slate texture to date.



Mojave Slate

It all comes together on our manufacturing line at Falcon Plastics in Madison, South Dakota. Each tile is carefully created, precision-cut, and then hand-checked to ensure quality and compatibility with every other Life Floor tile.



MAGNIFIED!

What is MicroTread™?

The biggest improvement to our **Slate** texture is something small. Look closely, and you'll notice tiny ridges and grooves, similar to our high-performing **Ripple** tiles.

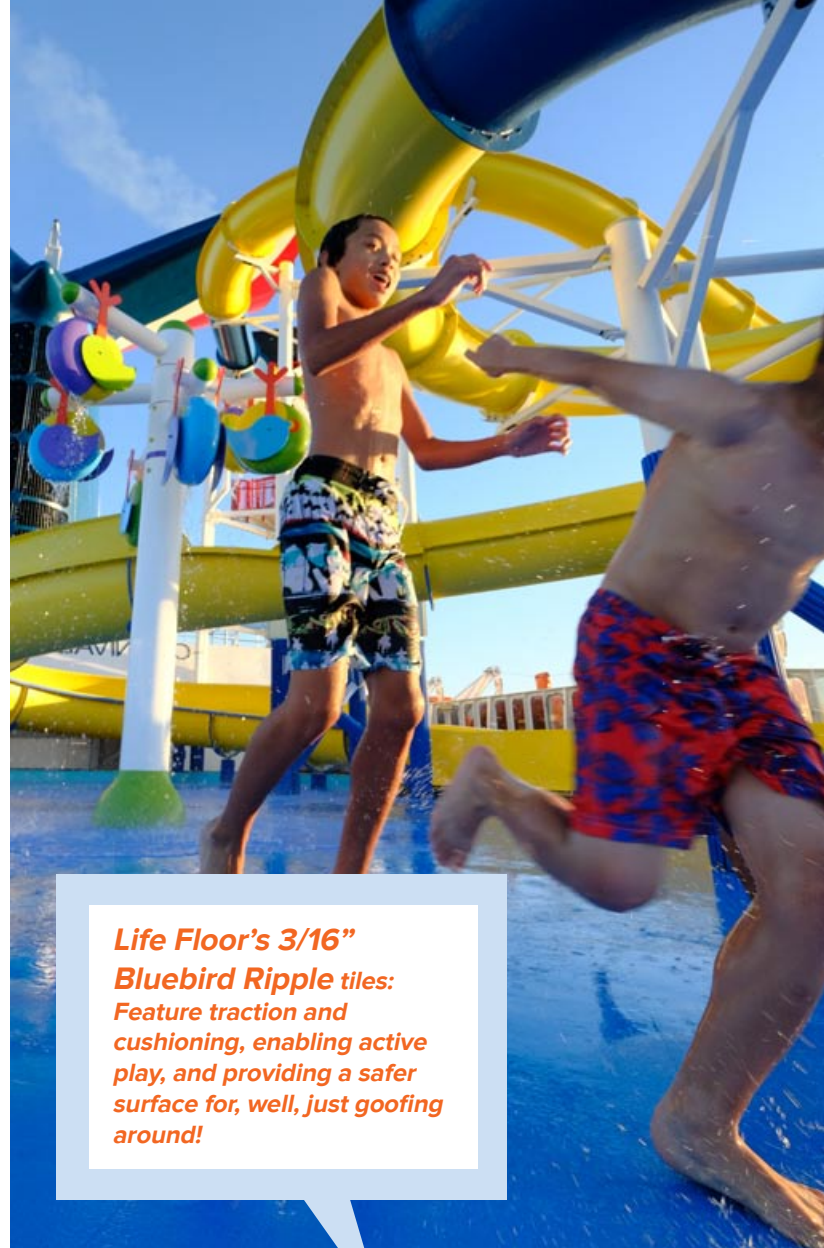
MicroTread™ increases the traction of our **Slate** texture while still allowing the beauty of natural stone to shine through. Even if your eyes don't notice it, your feet certainly will.

All aboard with Life Floor at
Carnival Imagination
WATERWORKS

The wait is over.

Carnival Imagination is out of dry dock and now features exciting new upgrades, including Life Floor decks for her WaterWorks waterpark and resort-style pool. With Life Floor already on board Carnival Magic, Carnival Fascination, and Carnival Sunshine, and refits expected on more ships soon, your next cruise may feature some of the safest fun at sea.





Life Floor's 3/16" Bluebird Ripple tiles: Feature traction and cushioning, enabling active play, and providing a safer surface for, well, just goofing around!

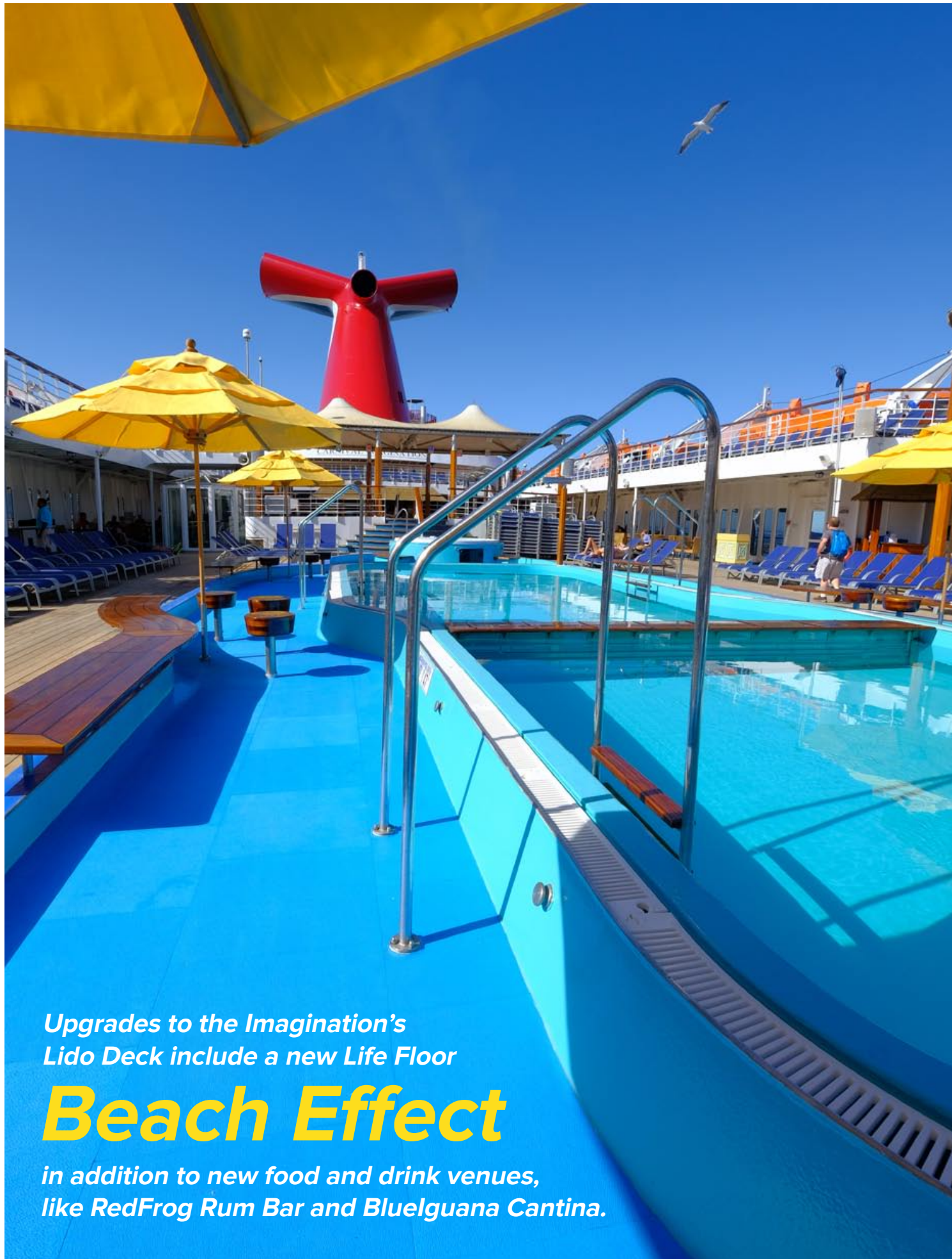


The WaterWorks aboard Carnival Imagination is especially popular on sea-days, when the ship is moving between ports and friends and family take time to relax, reconnect, and play on board.

Life Floor brings Award-Winning Safety to Sea

Along with **Life Floor**, the **WaterWorks** onboard **Carnival Imagination** includes a 300' long spiraling **Twister Waterslide**, two 82' long double-lane racing water slides, a splash area with a number of fun water spray features, and even **Mini Racer Slides** for the little ones on deck.

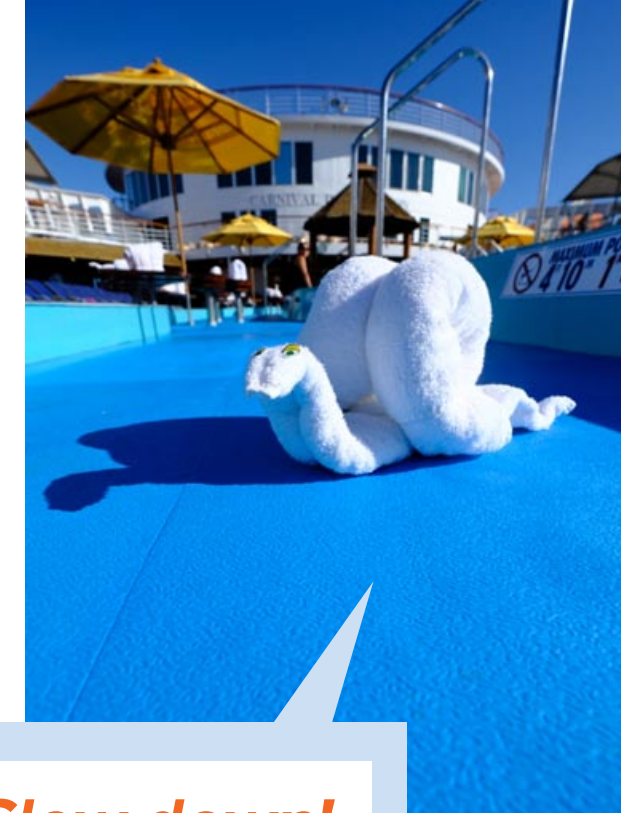




Upgrades to the Imagination's Lido Deck include a new Life Floor

Beach Effect

in addition to new food and drink venues, like RedFrog Rum Bar and Blueguana Cantina.



Slow down!

Imagination's resort-style pool is a great place to relax and take a dip, but keep an eye out for Carnival's world-famous towel animals on the Life Floor beach effect.





With over 105,000 square feet of indoor waterpark space, Garden Grove is Great Wolf Lodge's largest facility, and the first and only indoor waterpark in California.

Even better? Much of that square footage features our 3/8" Mojave Ripple.

Safety first at

Great Wolf Lodge in Garden Grove, California

IN any of the world's leading waterparks, safety is the top priority. **Great Wolf Lodge Garden Grove** is no different.

Having opened in early 2016, GWL Garden Grove immediately responded to customer feedback and began installing Life Floor in a number of key areas.

Now, guests and staff love the tiles. As a result, management has elected to install more and more Life Floor throughout the park, making this howlingly awesome park one of our favorites.





Park Entrance

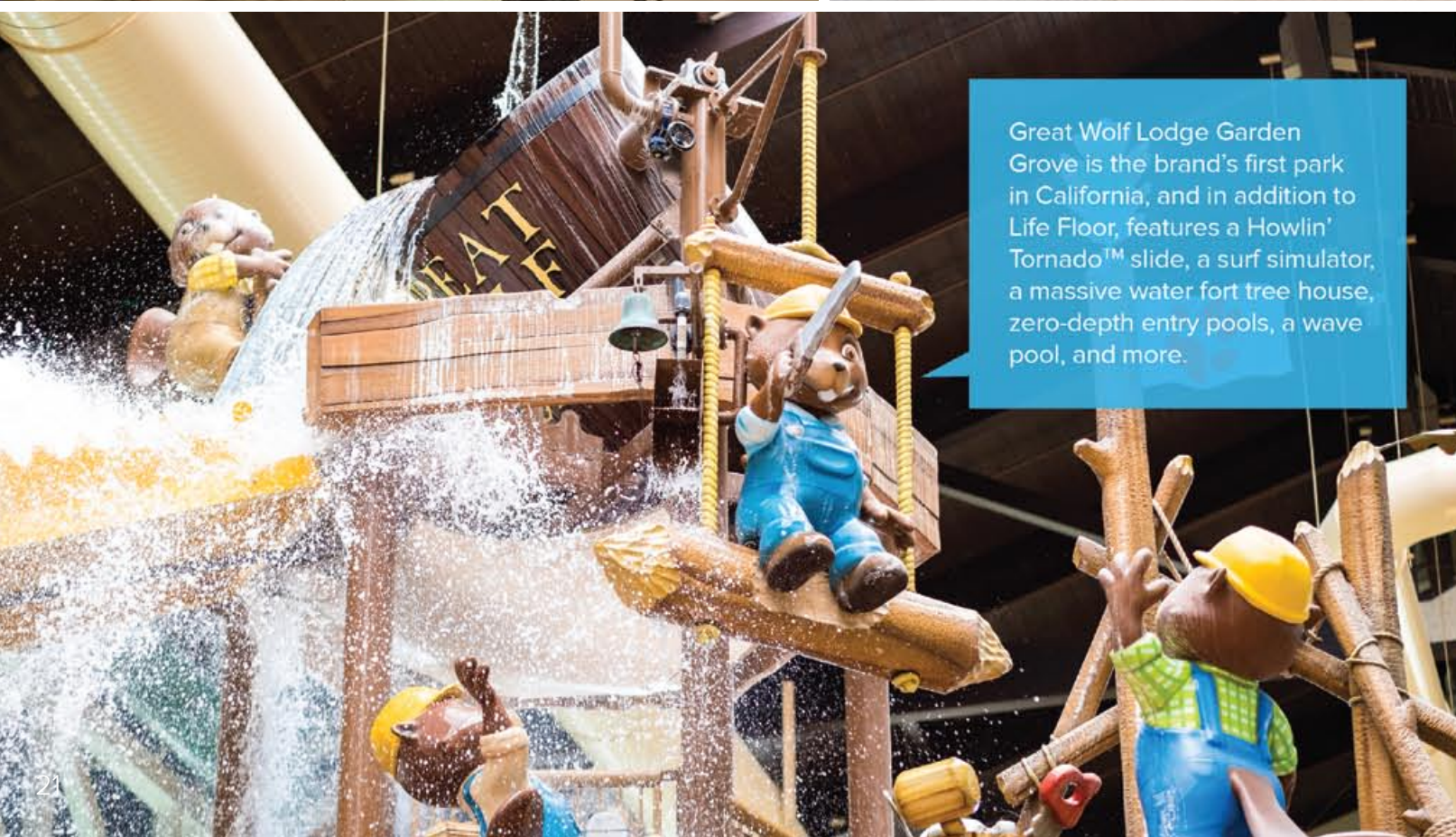


Walkways

With Life Floor, there's no reason to sacrifice theming for safety. To fit the rustic, north woods style of their waterpark, **Great Wolf Lodge** chose our popular thickness and texture combination, **3/8" Ripple**, in one of our classic colors, **Mojave**.



Mojave Ripple



Great Wolf Lodge Garden Grove is the brand's first park in California, and in addition to Life Floor, features a Howlin' Tornado™ slide, a surf simulator, a massive water fort tree house, zero-depth entry pools, a wave pool, and more.

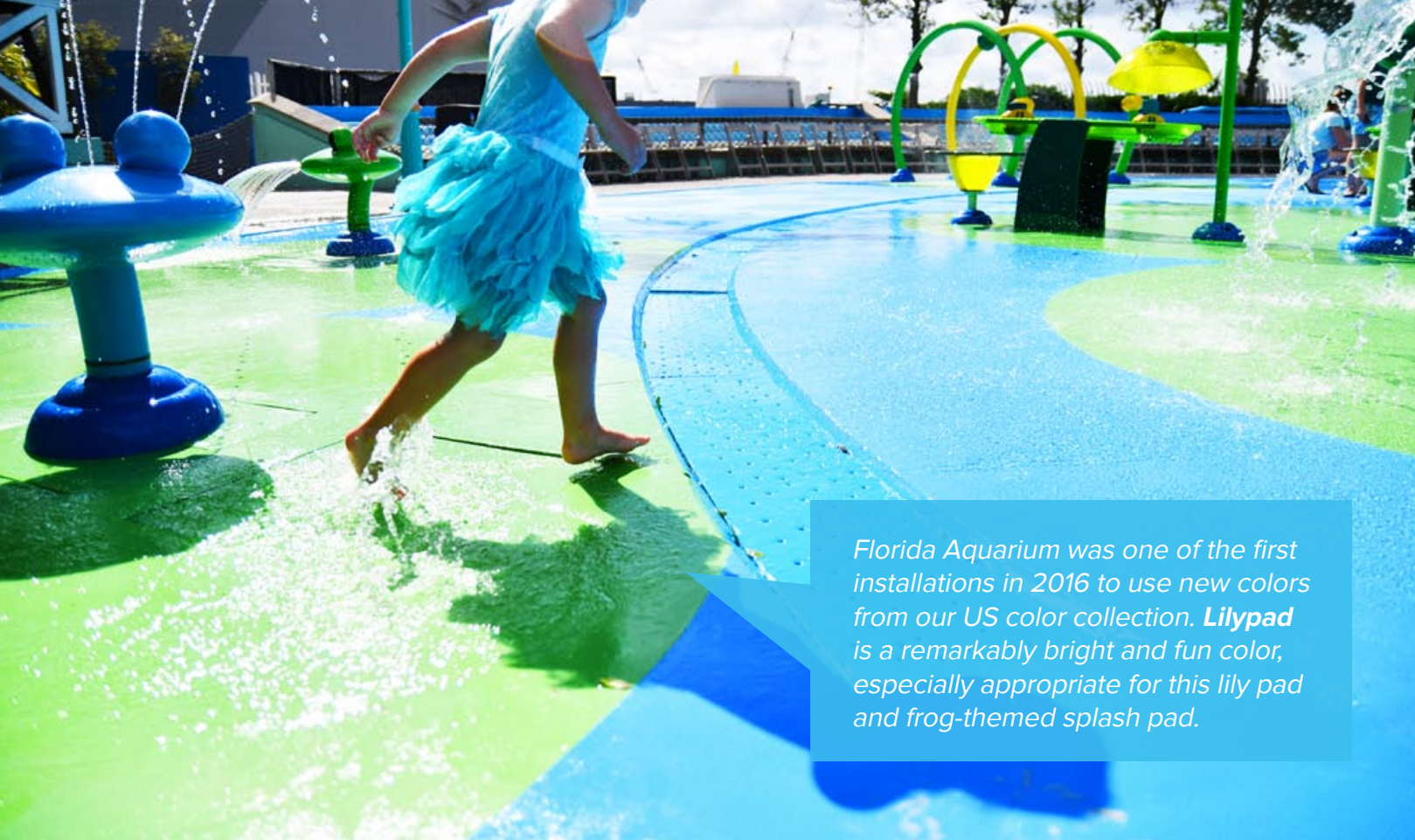


When installed around surfing attractions, Life Floor helps guests keep their footing while moving up and down frequently wet inclines.

FlowRider® Areas



Florida Aquarium
Splash Pad *in*
Tampa, Florida



Florida Aquarium was one of the first installations in 2016 to use new colors from our US color collection. **Lilypad** is a remarkably bright and fun color, especially appropriate for this lily pad and frog-themed splash pad.





*Florida Aquarium
Tampa, Florida*

Design

Dolphin Bay Resort & Spa
Pismo Beach, California

Safety Never Looked This Good

When you design with Life Floor, you don't have to sacrifice style for safety. With a range of color, texture, and thickness options, our tiles are versatile enough for virtually any environment.



Design with **COLOR**

Different facilities have different color needs. That's why our palette runs the spectrum, from bright and bold to natural and neutral.

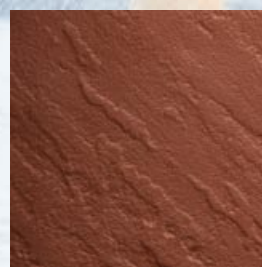
Whether you're creating a soothing spa environment or an exciting waterpark theme, we know we've got a color you'll love.

We're really happy with Life Floor. We love that you guys have expanded your colors, and we're going to keep that in mind for future projects. The more color options, the better!

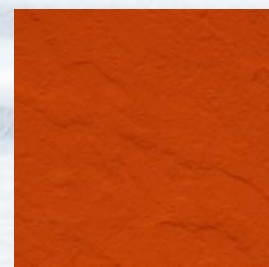
- Bythe Russian, NVRPA Splash Pad



Sepia



Terra Cotta



Maple



Firecracker



Ocean



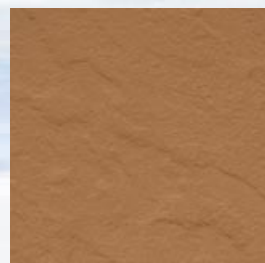
Bluebird



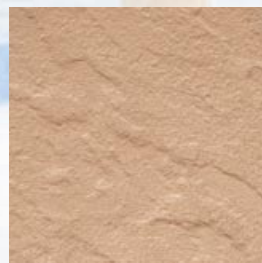
Aviator



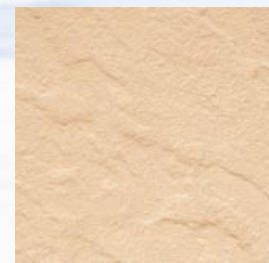
Iceberg



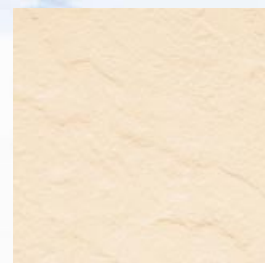
Tiki



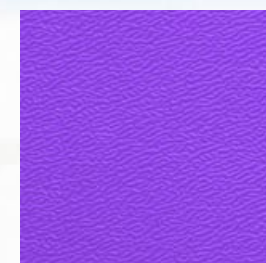
Mojave



Gobi



Sandbar



Iris



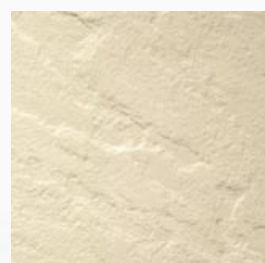
Thistle



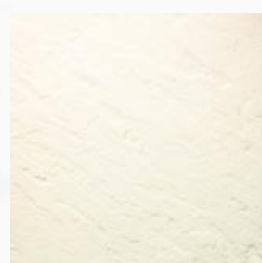
Heron



Foghorn



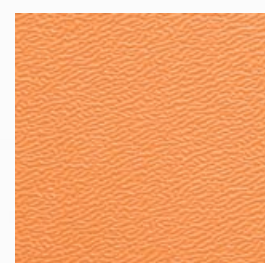
Sandstone



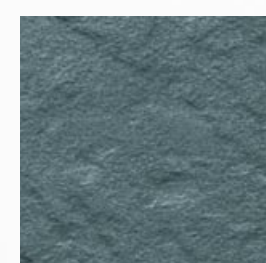
Ivory



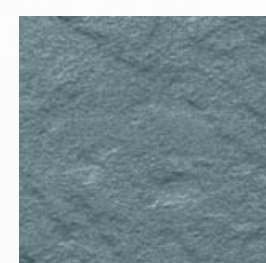
Porcelain



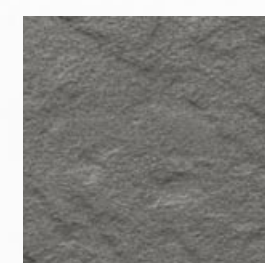
Coral



Kestrel



Bluestone



Boulevard



River Rock



Evergreen



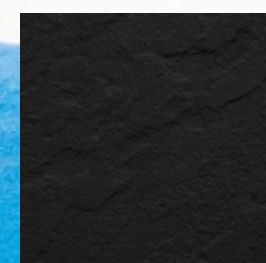
Olive



Turquoise



Kingfisher



Onyx



Lilypad



Limelight



Sunshine

Color Collection

Life Floor uses a color palette to meet the specific design and theming needs of facilities. Our tiles last in extreme hot and cold conditions both indoors and outdoors. For maximum comfort, we suggest our lightest color tiles for outdoor use.

“Life Floor’s texture has maintained its integrity over the past two summers. The color has lasted and looks great. Kids love it and parents love it. It is much more comfortable than pour-in-place surfaces and so much easier to clean.”

– Westfield Memorial Pool Westfield, New Jersey

Design with Texture

Life Floor is available in four natural textures. **Our Ripple texture has the highest traction rating when wet.**



Ripple

Ripple texture makes aquatic environments playful and safer. Popularly used in underwater applications such as splash decks, zero-depth entries, slide pads, and around spray features.



Slate

*Slate mimics natural stone, adding classic style to your pool decks, bathrooms, showers, and walkways. Now with **MicroTread™** for improved traction.*



Rustic Board

Add rustic elegance to pool decks, patios, stairways, slide towers, and docks, without the splinters.



Wood Grain

Wood Grain offers easy customization for designs that require a wood-like texture without the pre-existing grooves of Rustic Board. Create herringbone and other custom patterns by cutting tiles into individual boards.

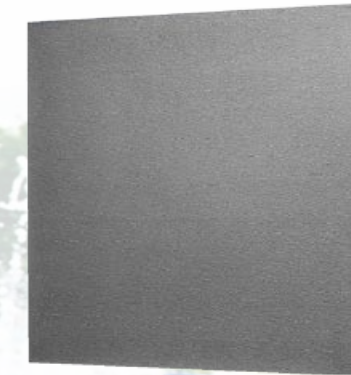


Design with Tile Thickness

Life Floor tiles are available in 3/16", 3/8" and 7/8" thickness options.

Why is tile thickness important?

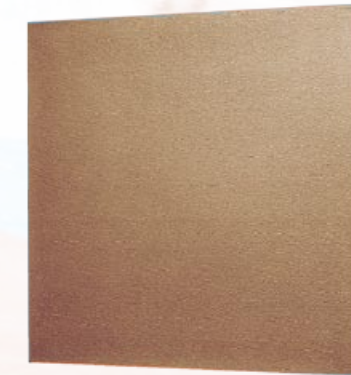
As tile thickness increases, so does critical fall height and safety. For aquatic environments with young children, we recommend using our 3/8" tile with Ripple, our most slip-resistant texture.



3/16"

Our most economical tile, ideal for coping, stairways, and lower traffic areas.

Dimensions: 24" x 24" x 3/16"



3/8"

Our 3/8" tile has a critical fall height of 1'-0". Ideal for splash pads, zero-depth entries, and other aquatic recreation areas.

Dimensions: 24" x 24" x 3/8"



7/8"

Our 7/8" tile has a critical fall height of 4'-0". Ideal for play areas with toddlers and small children, we also recommend using 7/8" tile at the bottom of slides and around play features.

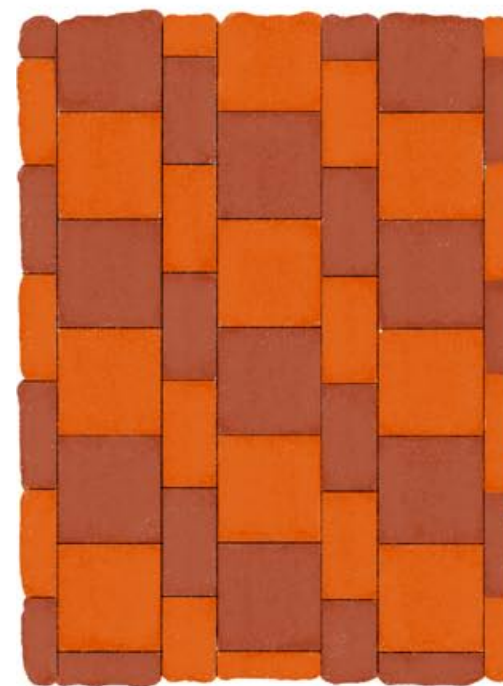
Dimensions: 24" x 24" x 7/8"



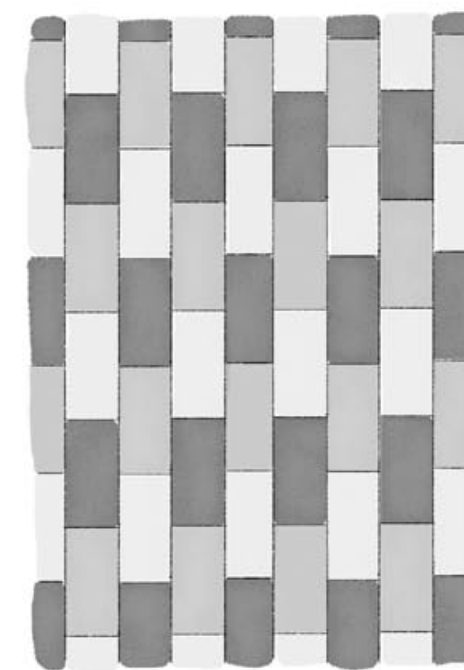
Experimentation is important.
That's why our designers use simple sketches, just like this one, to test out new ideas—even multi-colored herringbone.

You're Just Splitting Squares

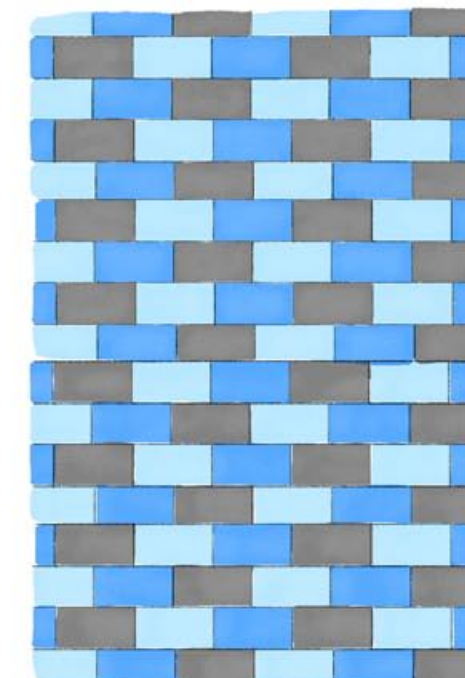
By simply cutting our tiles into rectangles or right triangles, we create a world of new design opportunities.



Spanish Tiles with
Terra Cotta and Maple

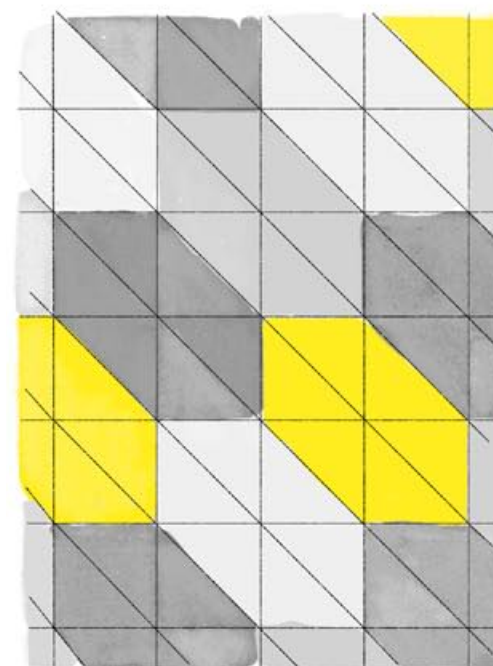


Milano with
Boulevard, River Rock, and Foghorn

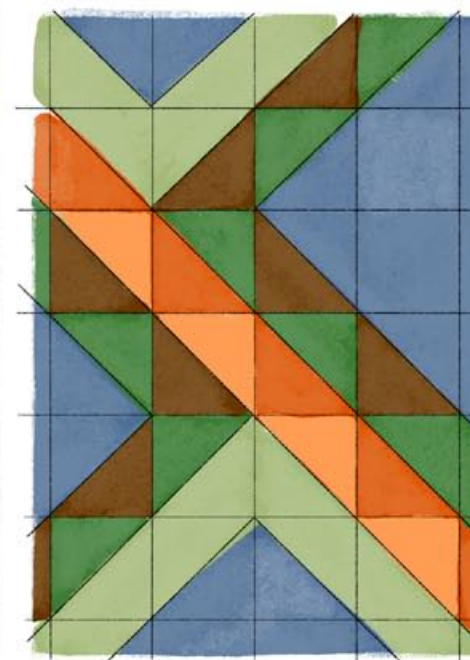


Subway with
Boulevard, Bluebird, and Aviator

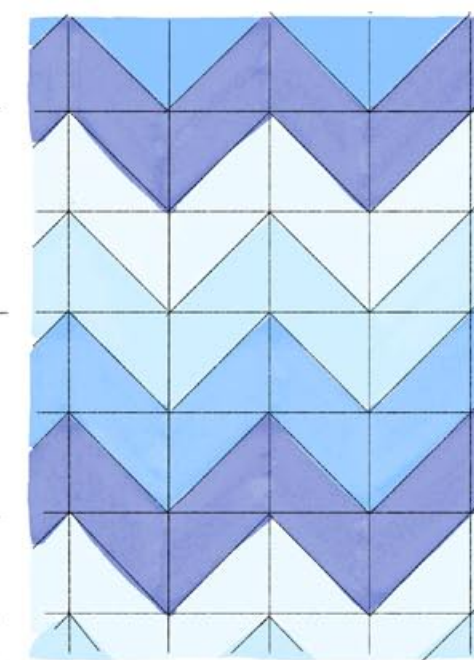
Or maybe try angles?



Stretch Hexagons with
Boulevard, River Rock, Foghorn, and Sunshine



Geometric Snakes with
Evergreen, Sepia, Olive, Maple, and Coral



Waves with
Ocean, Bluebird, Aviator, and Iceberg

On and Off the Grid

Life Floor is manufactured in squares, but our tiles can be cut, arranged, and rearranged to create a remarkable number of designs, including rectangles, triangles, and curves.

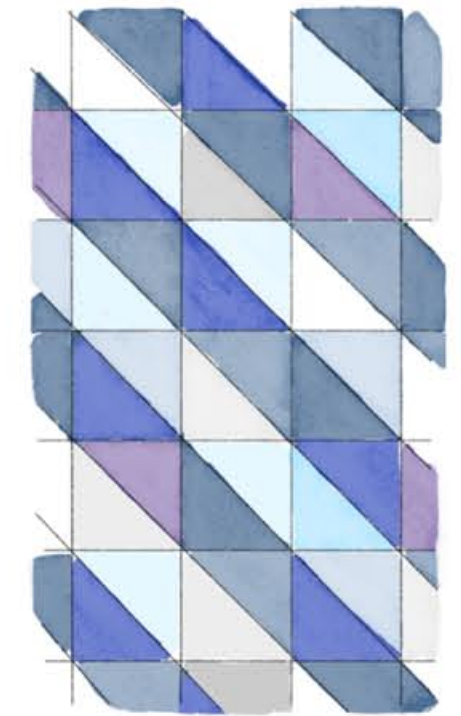
Have a complex, narrative design in mind? Create a die-cut pattern, or even waterjet our tiles into virtually any shape.

Certified installers are trained to apply our tiles in any layout.

Here, 3/8" Mojave and Sepia tiles are matched with Sepia transition strips to create an elegant, smooth finish around the pool and jacuzzi at Dolphin Bay.



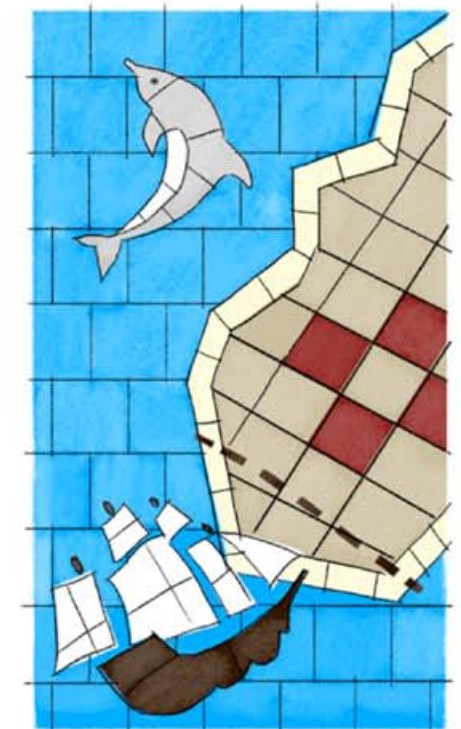
Create a gradient look by carefully selecting tiles from our expansive palette.



Contrasting light and dark triangles can create stripes or even pinwheels.



Die-cut designs are a cost-effective strategy for repeating patterns or logos.

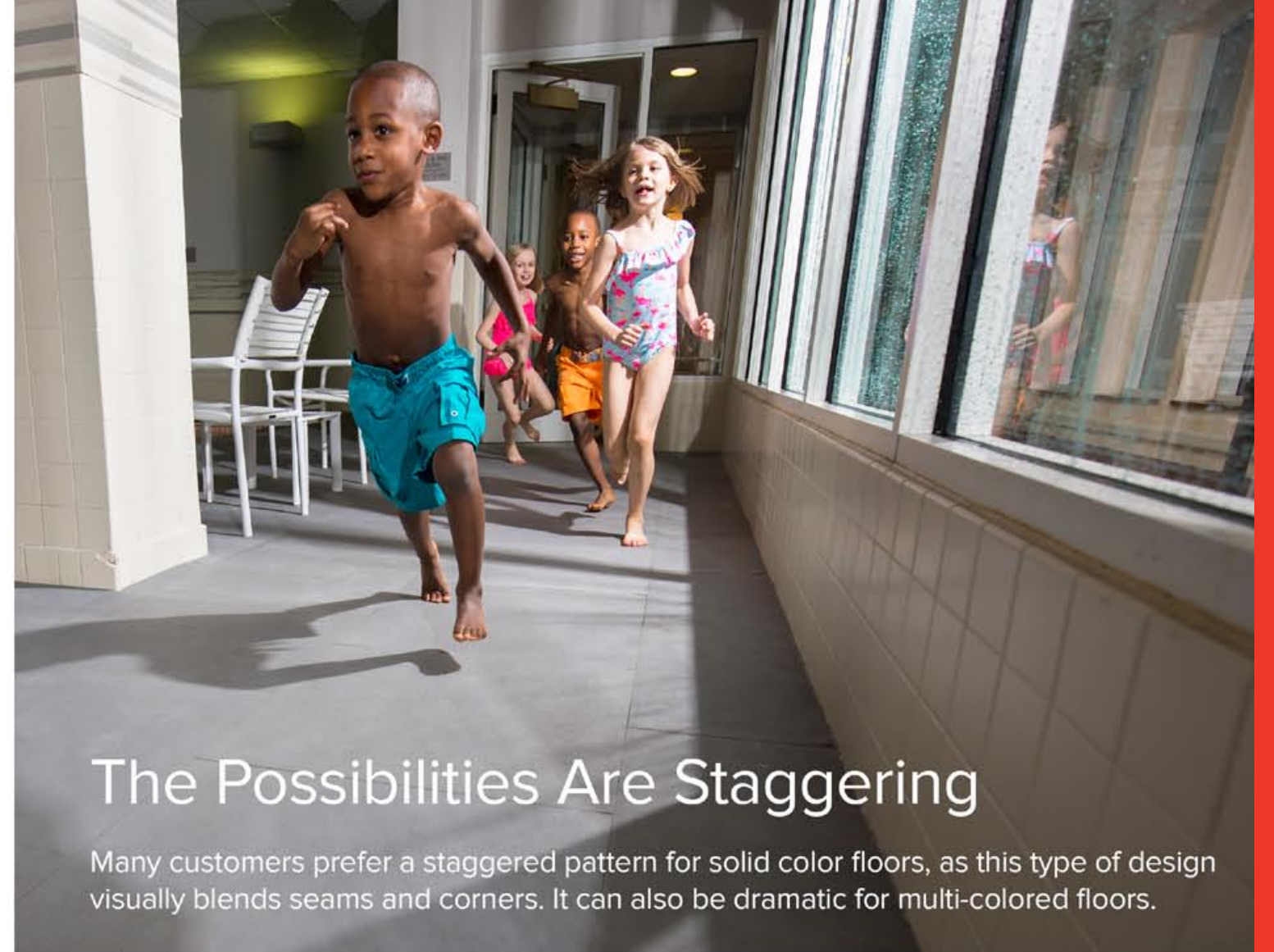


Waterjet cut designs are only limited by your imagination.



It's Hip To Be Square

The grid and the checkerboard pattern will always be classics, but here are a few more ideas our designers came up with.



The Possibilities Are Staggering

Many customers prefer a staggered pattern for solid color floors, as this type of design visually blends seams and corners. It can also be dramatic for multi-colored floors.



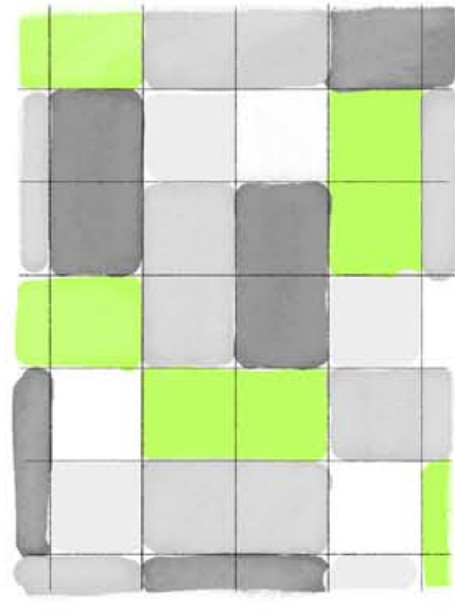
Mottled Colors with

Sepia, Tiki, Mojave, Gobi, and Sandstone



Gradient Steps with

Kestrel, Bluestone, Heron, and Porcelain



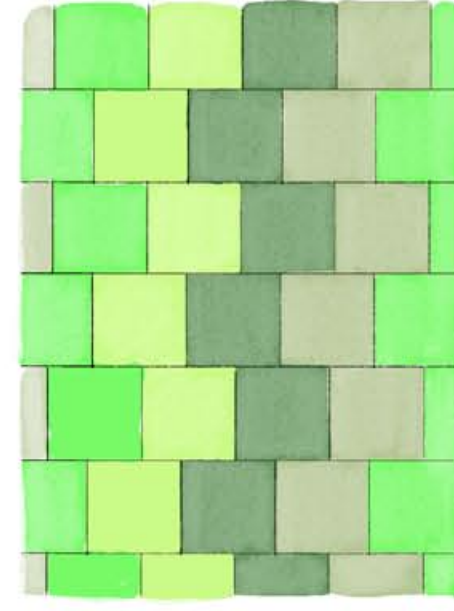
Green Accents with

Boulevard, River Rock, Foghorn, Porcelain, and Limelight



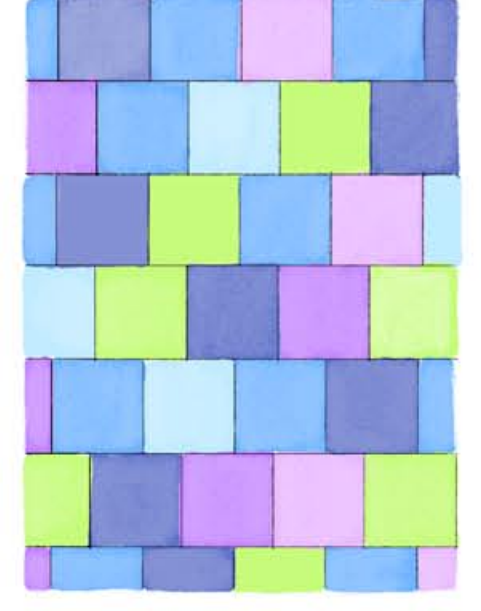
Mottled Red with

Sepia, Maple, Coral, and Sandstone



Staggered Stripes with

Evergreen, Olive, Lilypad, and Limelight



Iridescence with

Ocean, Bluebird, Aviator, Iris, Thistle, and Limelight



Custom Design

In 2014, Westfield, New Jersey brought our team an exciting challenge: They wanted us to upgrade the splash pad at their Memorial Pool Complex, but they also wanted to preserve the existing floor design, which had been designed and chosen by members of the community. Life Floor was able to replicate the existing design with a mixture of our custom colors, using our most slip-resistance texture, Ripple, creating a beautiful, safer splash pad even the smallest members of the community love.



“After installing Life Floor, we cut our injury rate down by 99%. We would go so far as to say that road rash and scrapes have been totally eliminated.”

- Bob Dalton, Lion Country Safari

Lion Country Safari
Loxahatchee, Florida

Inlaid Design

Custom splash pads can be designed using vector or CAD drawings. Working from a digital file, tiles are run through a waterjet cutter and assembled on-site.

Our team will work with you to create a floor that matches the rest of your park.

The possibilities are endless.



Rotary International Splash Pad
Clarksville, Tennessee

Flexible Installation. Full Integration.

Life Floor can be incorporated into even the most challenging designs. Our certified installers are trained to work around drains, transitions, and other features to create a thoroughly finished look.

Bearfoot Island
Wilderness Resort, Wisconsin Dells
Bluebird, Mojave, and Sandstone
with Sepia bear claw inlays.
Designed by Life Floor.

Drains and other maintenance features are flush and fully integrated with our tiles.

Narrative design integrates the deck with both the spray features and the splash pad to enhance the park's rustic wilderness theme.

Life Floor is UV-stable, chemical resistant, and unlike other surfaces, never needs to be repainted or resealed.

Inlaid designs can be as big as your imagination and as small as your finest details.

Applications

Life Floor goes wherever you find bare feet and wet floors.

Your feet will be happiest on our tiles, and our tiles are at their best wherever floors are wet and feet are bare. Our most popular applications include: splash pads, slide pads, lily pad landings, slide towers, pool decks, and zero-depth entries. See some of our past and recent projects on the following pages.

**Lion Country Safari
Loxahatchee, Florida**

Proven for Aquatics

In January 2014, the City of Dublin, Ohio began a search for the best surface to renovate their beautiful 8,000 square foot municipal pool. After a nationwide search, the answer was obvious. They chose Life Floor.

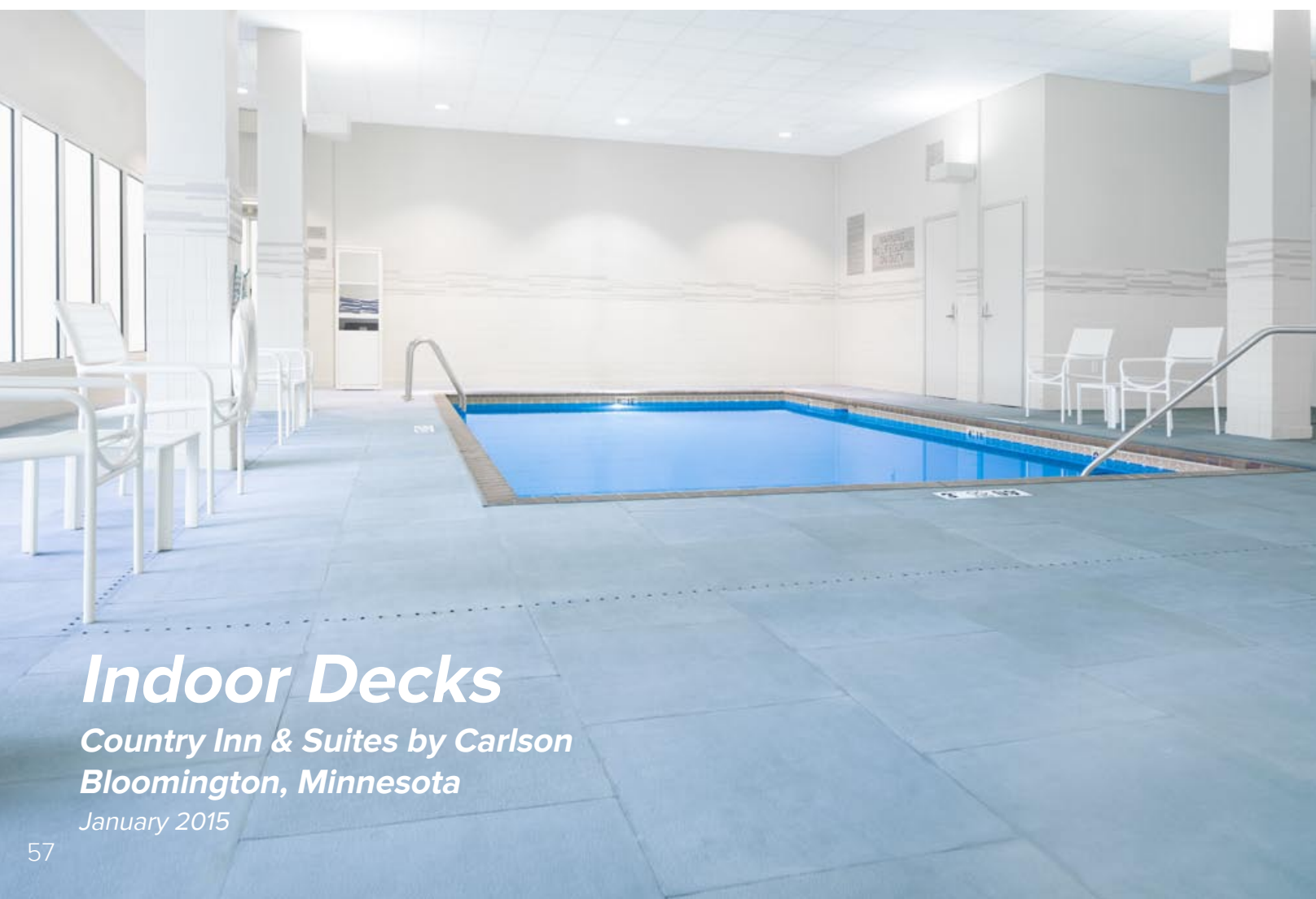


Indoor Decks

***Country Inn & Suites by Carlson
Bloomington, Minnesota***

January 2015

River Rock Ripple



Indoor Decks
Country Inn & Suites by Carlson
Bloomington, Minnesota
January 2015



River Rock Ripple



American Family Fitness
Glendale, Virginia
November 2013

Boulevard Slate

Fitness + Athletics

*Put your decks **ahead**
of the competition*



Boulevard Slate



*American Family Fitness
Glendale, Virginia
November 2013*

"We have had our Life Floor on the pool deck for the past several years, and are very happy with the results. We went from nearly daily slips and falls, to virtually none. Patrons love it, staff love it, and I would do it again in a minute."

- Lisa Gedker, Maple Grove Community Center

Custom texture: Angled Board

Indoor Pool Decks

Maple Grove Community Center

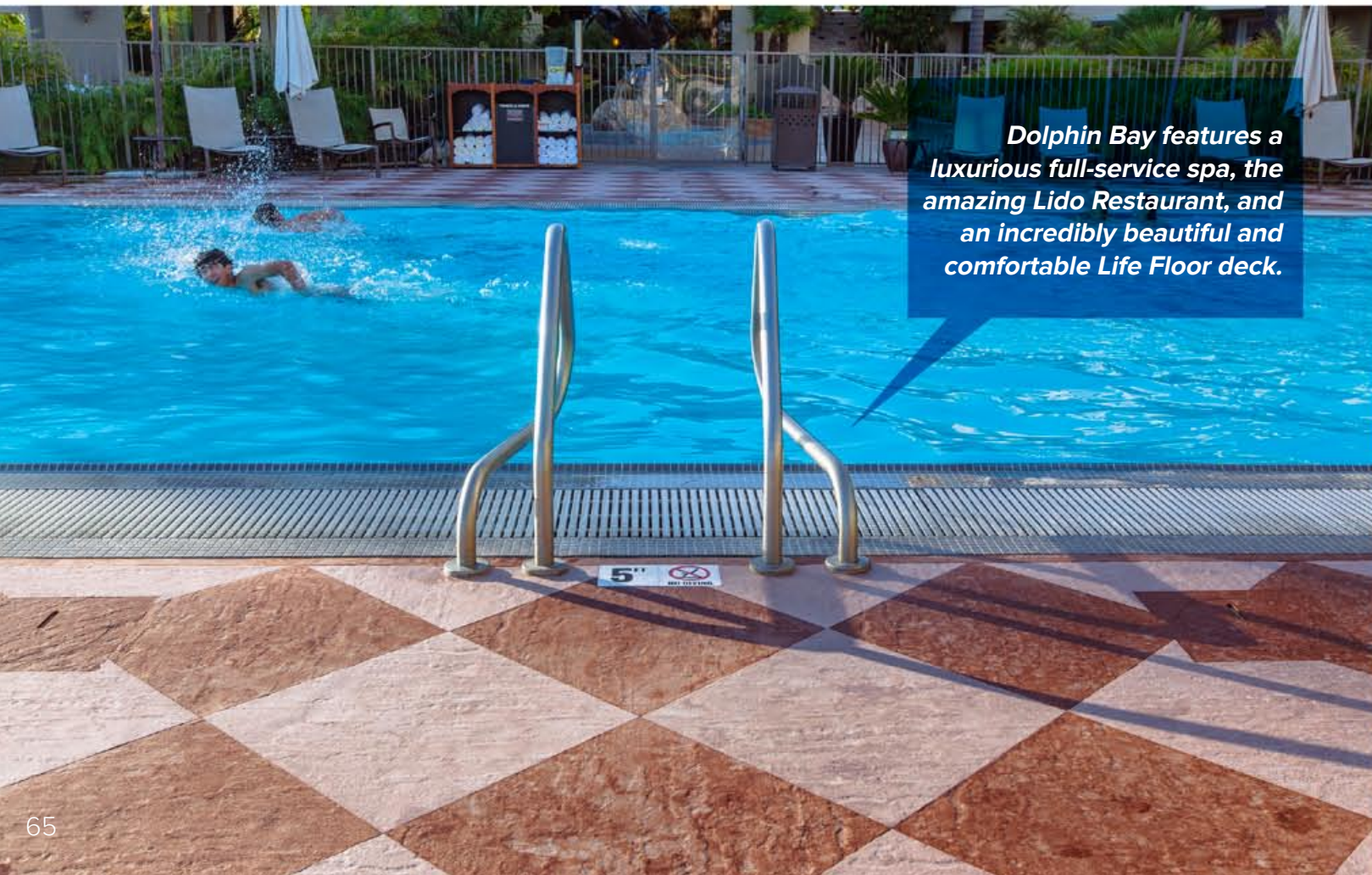
Maple Grove, Minnesota

September 2011

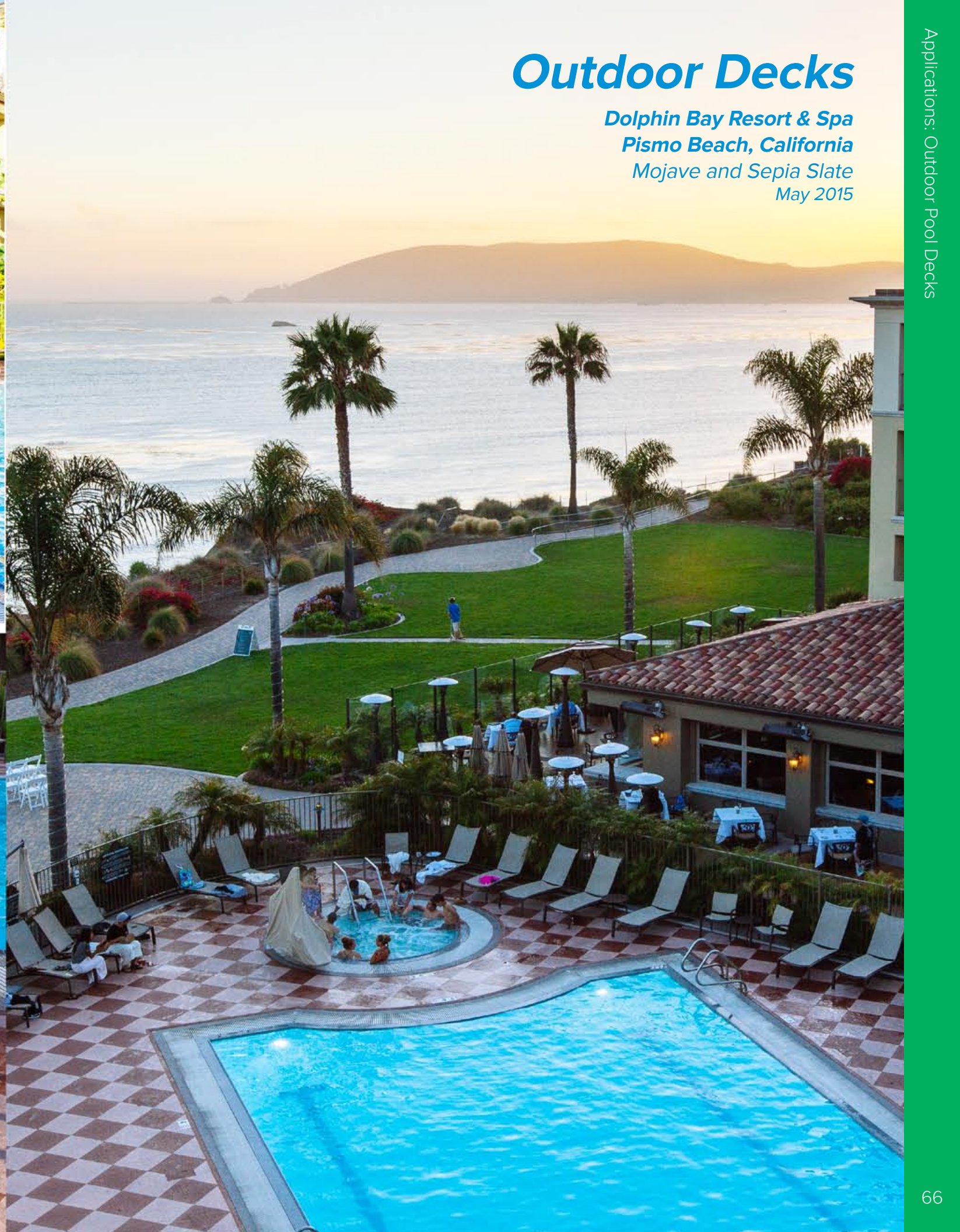
River Rock Angled Board

Outdoor Decks

*Dolphin Bay Resort & Spa
Pismo Beach, California
Mojave and Sepia Slate
May 2015*



Dolphin Bay features a luxurious full-service spa, the amazing Lido Restaurant, and an incredibly beautiful and comfortable Life Floor deck.





Outdoor Decks

Six Flags White Water

Marietta, Georgia

May 2012



"We have been overly pleased with Life Floor. It was the perfect flooring solution for our wet areas."
- Trevor Leonard, Six Flags White Water

River Rock Rustic Board



Splash Pads

Westfield Memorial Pool Complex
Westfield, New Jersey
May 2014



“Our community loves Life Floor. Everyone who visits the splash pad says it feels comfortable and looks beautiful. It is the best surfacing we’ve ever had.”

- Westfield Memorial Pool





Splash Pads
*Bearfoot Island, Wilderness Resort
Wisconsin Dells, Wisconsin
May 2013*



Play Structures

*Joker Soaker, LEGOLAND®
Winterhaven, Florida
April 2015*

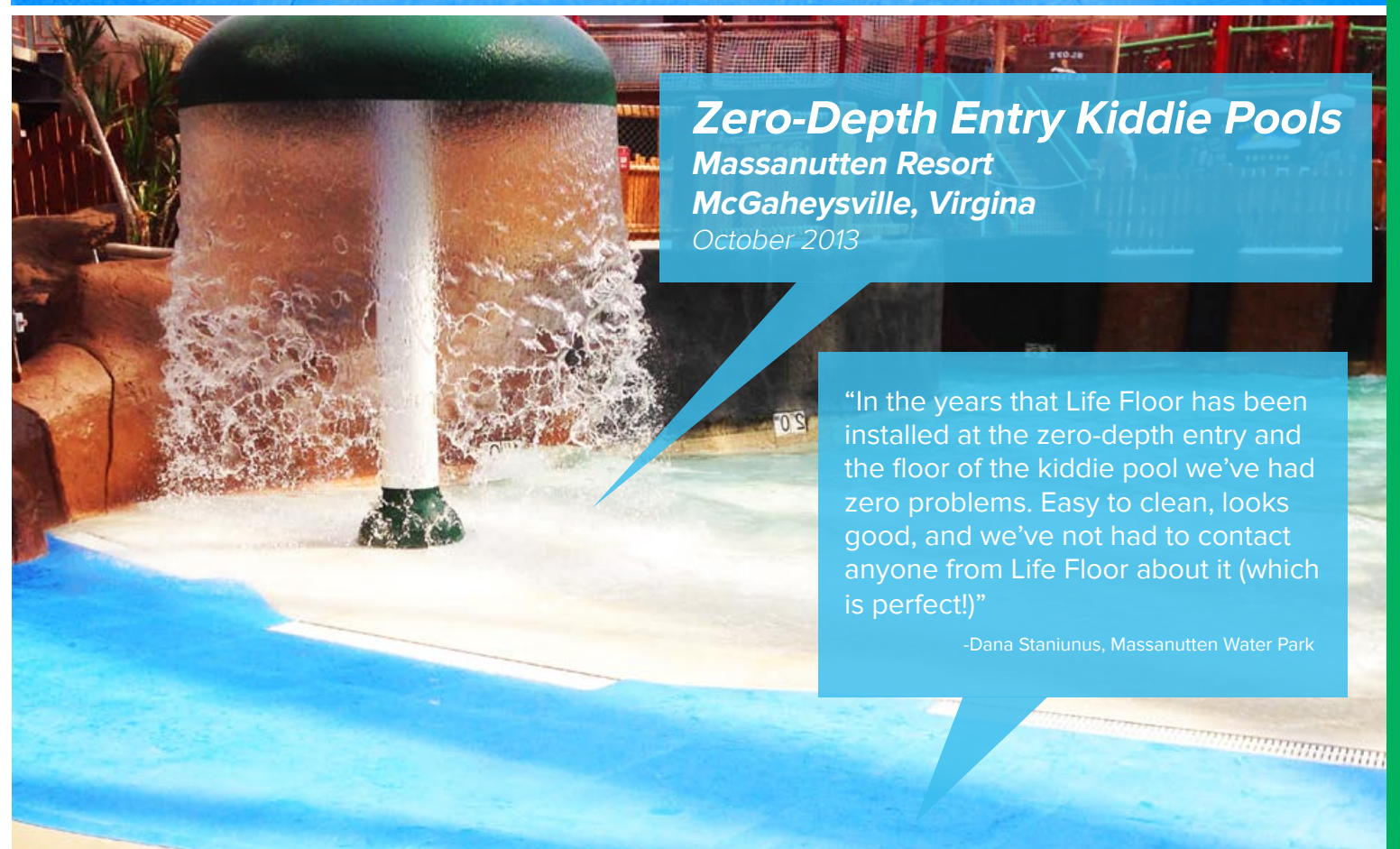


Slide Pads
LEGOLAND®
Carlsbad, California
January 2014



“Life Floor solved a great problem we were having with kids slipping. Since installing, we haven’t had any issues or complaints. We have been especially pleased with the tile’s color fastness and durability through winter conditions.”
-Ben Curcio, Elk Grove Parks

Zero-Depth Entry Lazy Rivers
Elk Grove Parks District
Elk Grove, Illinois
May 2013

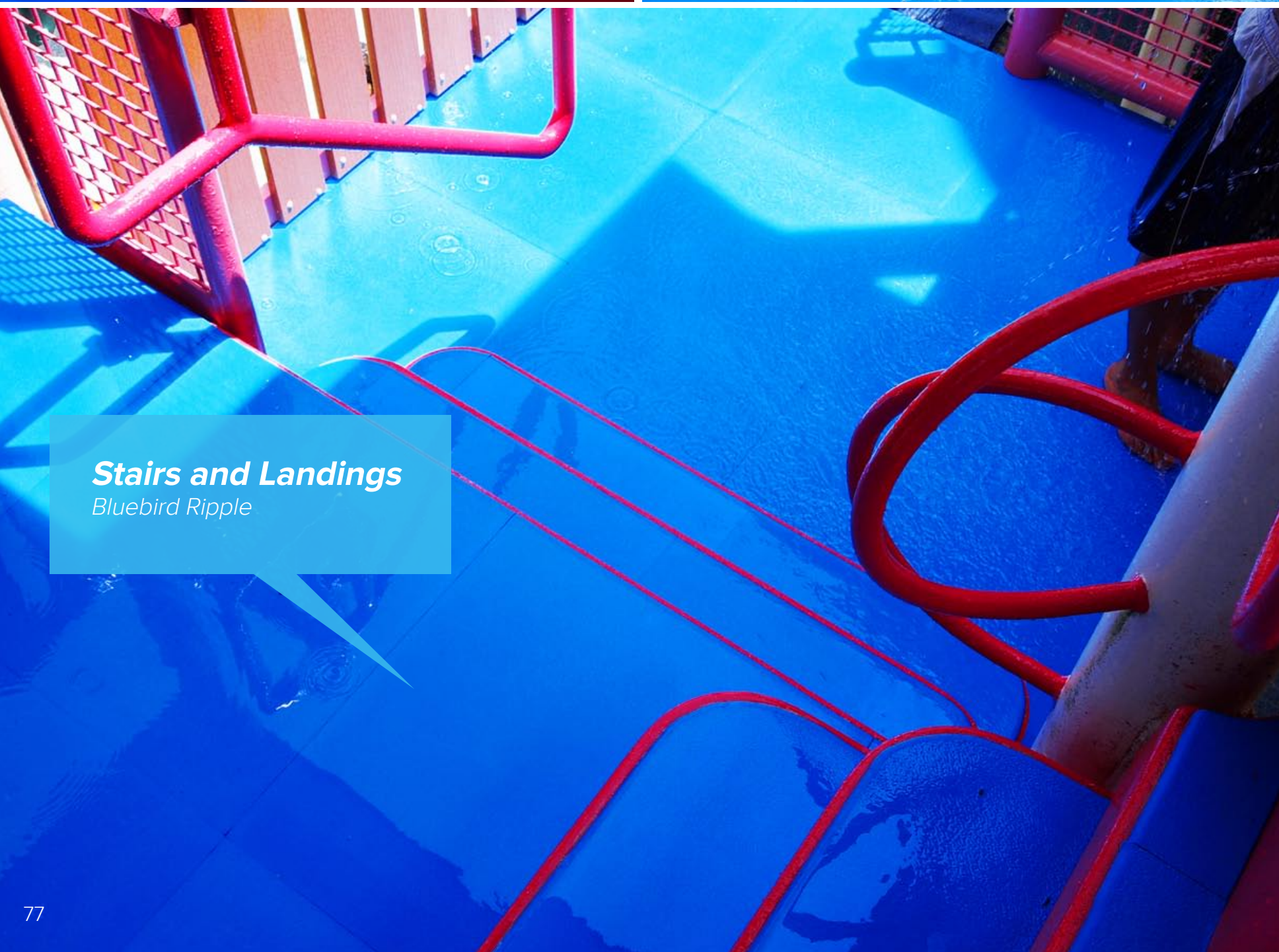


Zero-Depth Entry Kiddie Pools
Massanutten Resort
McGaheysville, Virginia
October 2013

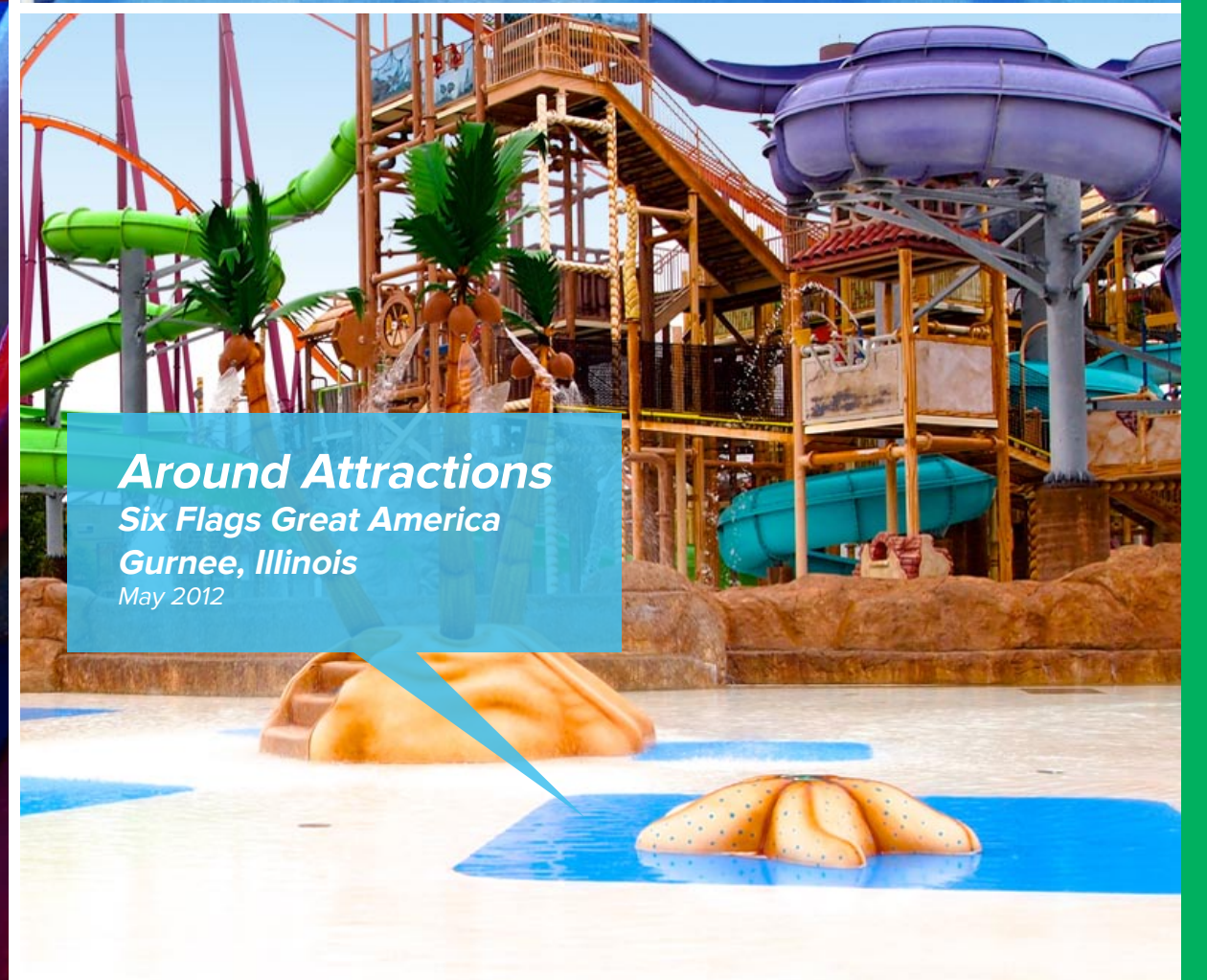
“In the years that Life Floor has been installed at the zero-depth entry and the floor of the kiddie pool we’ve had zero problems. Easy to clean, looks good, and we’ve not had to contact anyone from Life Floor about it (which is perfect!)”
-Dana Staniunus, Massanutten Water Park



Spray Features
Great Waves Waterpark
Alexandria, Virginia
April 2016



Stairs and Landings
Bluebird Ripple



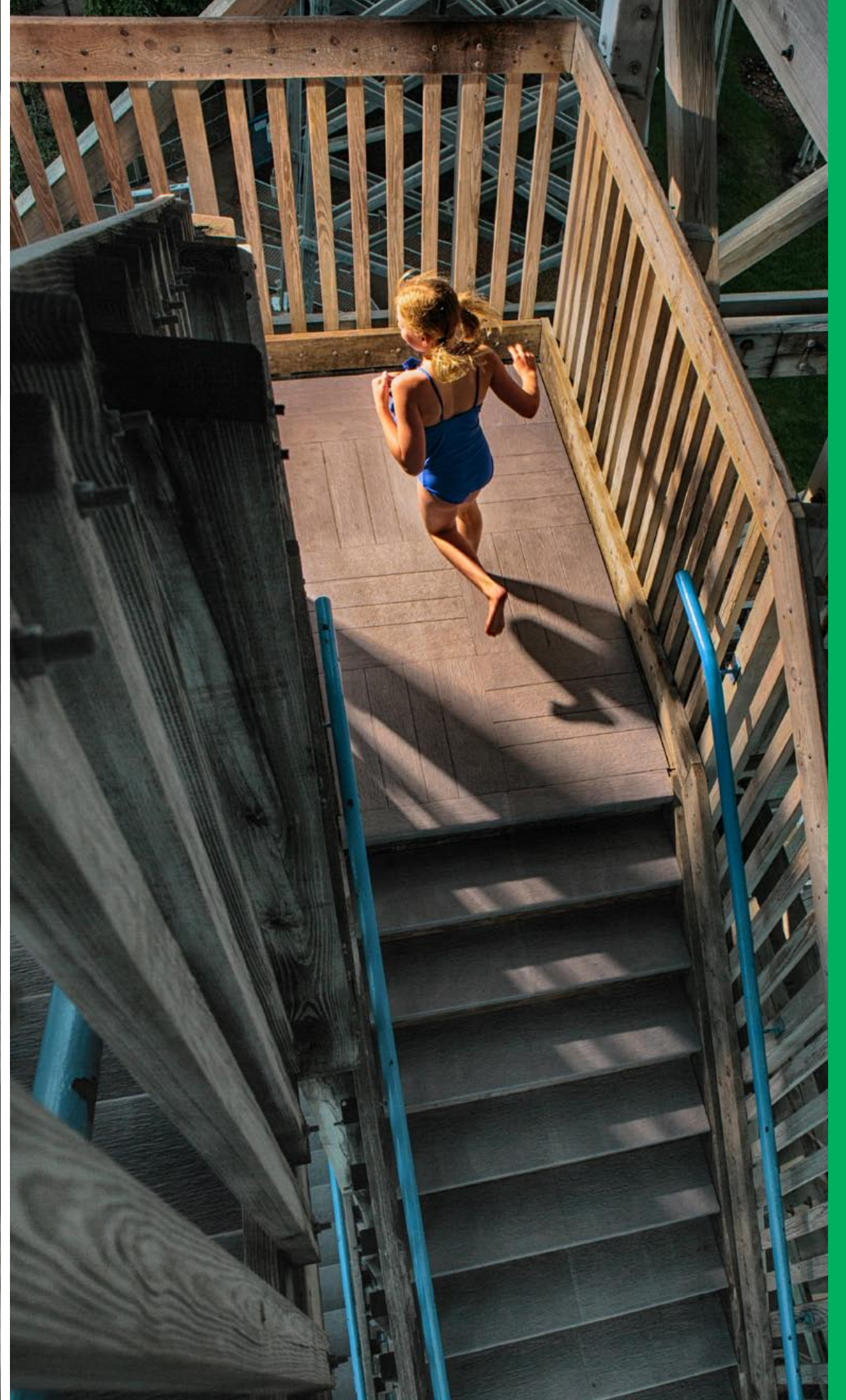
Around Attractions
Six Flags Great America
Gurnee, Illinois
May 2012

Lazy Rivers
City of Dublin Community Center
Dublin, Ohio
August 2014





Slide Towers
River Rock Rustic Board





Outdoor Decks
San Diego, California
Boulevard and Bluestone Slate

Finishes

Life Floor provides multiple solutions to finish your floor.

Depth Markers

Depth markers are fully customizable, installed with the rest of your floor, and made with the same high-performing material as the rest of our tiles.



Transition Strips

When surface heights vary, our transition pieces create safer gradations between Life Floor and the substrate.



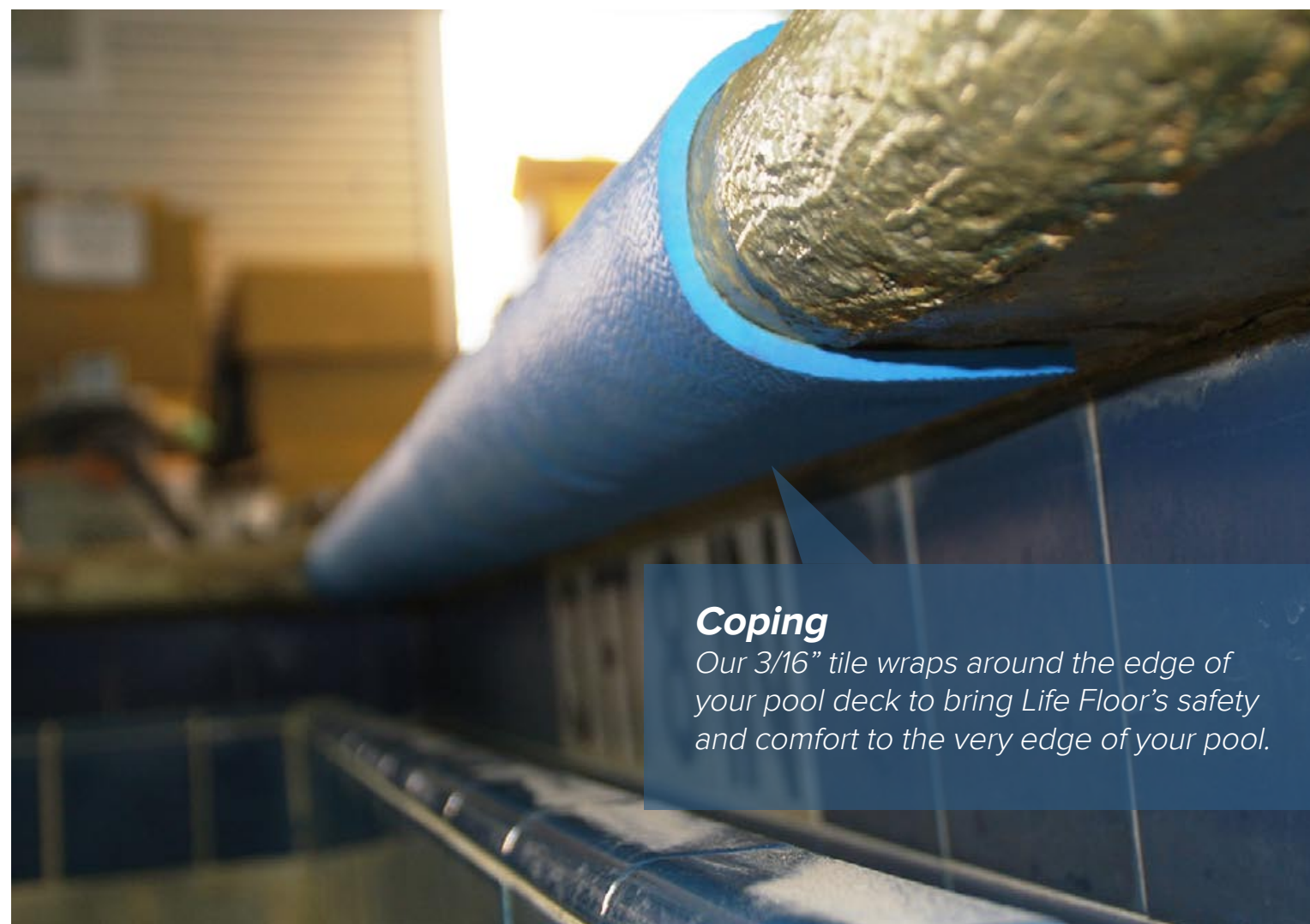
Drain Covers

Drains are easy to fit with Life Floor. We simply measure the drain, cut a piece to fit, and arc punch holes to ensure proper drainage.



Coping

Our 3/16" tile wraps around the edge of your pool deck to bring Life Floor's safety and comfort to the very edge of your pool.





“It looks good, keeps our guests safe, is easy to keep clean, and our staff enjoys standing on it while they work.”

- LHR Hospitality Management

Technical Support

Traction	89
Cushioning	91
RepelCell™ Technology	93
General FAQs	95
Installation	97
Maintenance	99
Cleaning	101
Tile Replacement	103



A Revolutionary Surface: Traction

Not slippery when wet.

Slips and falls are a challenge in any aquatic environment. While conventional solutions often involve abrasive coatings, we designed Life Floor to accommodate the way people actually walk through aquatic environments: barefoot!

Life Floor tiles are soft for bare feet and slip-resistant without being rough. If you do fall, our tiles are cushioned to minimize breaks and bruises, and gentle enough to prevent cuts and scrapes.



Our Chief Technical Officer, Jason Bahrke, created this **slip-resistance test** by building a ramp covered in 3/8" Life Floor Tiles and broomed concrete. He sprayed water on the ramp as he jumped on each surface, completing the test on 30, 35, and 40 degree inclines.

With a BPN value between 42-45, Life Floor is significantly more slip-resistant than broomed concrete. Even at a 35 degree incline, our testers are still sure-footed on Life Floor.

See us in action: a video of this experiment is available on lifefloor.com/safety.

A Revolutionary Surface: Cushioning

Whether you're running, jumping, playing, or just relaxing, softer floors make life more comfortable.

Life Floor tiles are durable but soft, meaning fewer broken plates, fewer broken phones, and most importantly, fewer bumps and bruises. In fact, we've virtually eliminated slip-and-fall injuries in some commercial facilities.

How cushioned are Life Floor tiles?

Remember that science project where you tried to drop an egg without letting it break? Of course it didn't work. And it's not the egg's fault, either. The floor was way too hard. What if you could change that?

That's an egg. It's bouncing.

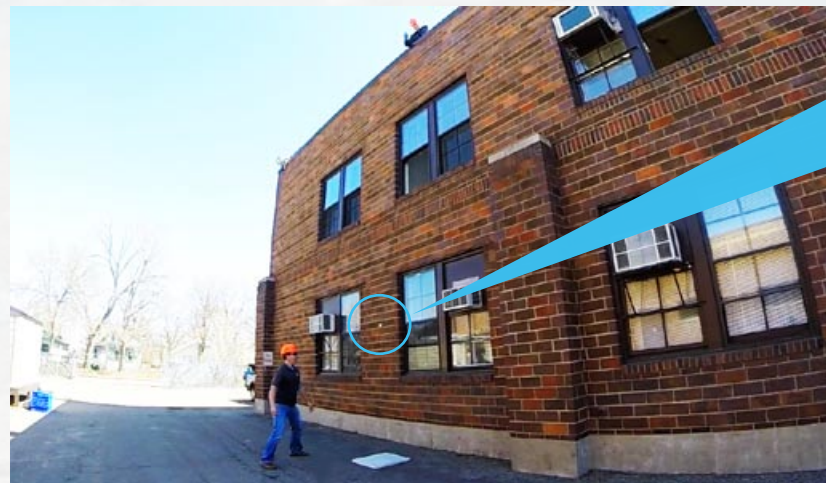
Our 3/8" tile has a critical fall height of 1 ft, but most eggs won't break when dropped from 3 ft above. Seriously. Order a sample and try it.

You can even layer Life Floor to absorb greater impact. Our testers have dropped eggs onto 1 1/4" Life Floor from our roof, 25 ft above. The egg bounced away, intact.

Visit lifefloor.com/whatislifefloor to see the video!

"My members are thrilled; the comfort is excellent. In fact, one of my instructors had planned to retire at the end of this year because of the toll the cement deck was causing on her body. Once we installed Life Floor, she postponed her retirement."

— Big Canoe Fitness Center, Big Canoe, Georgia



A Revolutionary Surface: RepelCell™ Technology

Life Floor tiles repel water and other liquids, so they're perfect for aquatic environments. Our patented RepelCell™ technology makes Life Floor non-absorbent, antimicrobial, stain-proof, and chemical resistant.

Totally Waterproof

Life Floor tiles are impervious. They will not absorb water or other liquids, and underwater applications last just as long as above-water applications.



Food stains before and after a 24-hour period



Virtually Impossible To Stain

We've tested tiles with food and chemical spills, and we've yet to find anything that stains Life Floor. Tiles are even easier to clean with our suite of Life Floor Cleaners.

(Long-standing water and improper cleaning may result in dirty tiles.)

Incredibly Antimicrobial

Closed-cell technology helps prevent the growth of harmful bacteria and mold.

General FAQs

What is Life Floor?

Life Floor is a 24" x 24" foam-rubber floor tile that is designed for aquatic environments with predominantly barefoot traffic.

Why is Life Floor the best aquatic surface?

Life Floor is made with RepelCell™ technology, with industry-leading traction and cushioning to create a safer and more comfortable surface. Life Floor's modular tiles allow for custom designs to complement the designs of any facility. Additionally, tiles are impervious to water, dirt, and debris, allowing Life Floor to be cleaned and maintained more easily than other surfaces.

Where is Life Floor used?

Life Floor is commonly used as a surfacing product for (but not limited to) pool decks, splash pads, locker rooms, showers, zero-depth entries, and underwater applications.

Which Life Floor tile is best for my application?

Our team or dealers will help you select the texture, thickness, and appearance that works best for your facility and traction. In general, we recommend Life Floor tiles with the highest dynamic slip-resistance for areas of active play, sloped surfaces, or other applications where slip-resistance is a top concern (e.g., splash pads). We also recommend a minimum thickness of 3/8" in areas of active play for increased cushioning and impact attenuation.

What is Life Floor's fall height?

Life Floor standard thickness is 3/8", which has a fall height of 1'-0". The thicker 7/8" tiles have a fall height of up to 4'-0". You can also stack tiles to achieve higher fall heights, although this adds expense to an installation.

What is Life Floor's warranty?

For each application, Life Floor offers a 5-year warranty for normal wear and tear on 3/8" tile and a 3-year warranty on 3/16" tile. In areas of extreme traffic (250,000 annual users or more) the warranty is 2 years.

What is the lead time for new orders?

Standard lead time is 6 weeks from order. Featured colors can be shipped sooner as they are often in inventory. Items can be rush shipped in 3-4 weeks for an additional charge.

Won't water get in between the tiles?

Short answer: not really, but even if water does get between the tiles, it's not an issue. Life Floor has not had a single post-installation incident where a customer reported problems due to water between their tiles.

Long answer: seams are generally tight, but water may use a seam to flow to a drain or to temporarily rest before evaporating. For indoor installations, we recommend routine cleaning to remove water before it can stagnate. Outdoors, the water will typically evaporate before it can stagnate. We also use a contact cement adhesive that creates a waterproof barrier underneath the tiles.

Will heavy objects damage Life Floor?

Heavy objects could leave a depression on the tile's surface. Depending on how heavy the object is and how long it was left in place, the depression should rebound over time.

Does it come in rolls?

No. Life Floor tiles are individual 24" x 24" tiles. Tiles can be custom cut to smaller sizes if needed. When installed, single tiles are placed individually with care, as opposed to some floor coverings that are unfurled in large, unwieldy rolls.

Individual tiles also can be removed and replaced if maintenance needs arise, which affords a facility much more flexibility over the long term.

Will Life Floor cause a tripping hazard?

Life Floor offers transition strips for 3/8" and 7/8" tiles. The strips are 3" by 2'-0" to provide a clean transition from an existing floor up onto Life Floor. In addition, your installer can router the edges of Life Floor to provide a more finished look.

What is Life Floor's coefficient of friction?

The coefficient of friction measured by ASTM C1028 is .92. Life Floor has also achieved the highest possible rating using other testing methods, including the British Pendulum test for dynamic coefficient of friction. You can have confidence in the superior performance of Life Floor in wet barefoot applications compared to other flooring materials.

How does Life Floor perform in extreme heat/freezing climates?

Life Floor has installations across the United States and internationally that have withstood temperatures of -40°F to 120°F. The product has performed well in all climates. When adhered with contact cement, tiles will expand and contract with a concrete substrate.

Will the tiles become hot?

The tiles can become warm in direct sunlight without water, comparable to concrete. In these areas we recommend our lighter colors. However, in areas that are consistently wet (splash pads, zero-depth entries), the tiles stay relatively cool. Tiles will also cool off quickly underfoot when standing in the same place for a few seconds.

How does Life Floor perform with salt water?

The beauty of RepelCell™ technology is that Life Floor performs the same with salt water, chlorinated water, and untreated water. Salt water will not cause erosion of the Life Floor tiles.

What happens if children pick at the tiles?

The bond of Life Floor to concrete is extremely strong. A strong adult typically needs tools to remove a tile from its substrate using full body force.

What type of shoes can be worn on Life Floor?

Sneakers and most other shoe types will not typically damage Life Floor tiles, but in high shoe traffic areas, wear may accelerate. High heel shoes may cause indentations to Life Floor, but these impressions are often not visible from eye level and do not affect tile performance.

Can you ride bikes on Life Floor?

Bicycle wheels are not an issue on the floor. However, the customer should be aware that if a bicycle is skidding, laying on its side, or being dragged across the floor, the tiles may be damaged by the pedals or other sharp objects on the bike.

Installing Life Floor

Life Floor has built a network of Certified Dealers and Installers that can assist you in both purchasing and installing Life Floor. For larger facilities and organizations, we also offer on site training to enable your own staff to install Life Floor. Our flooring experts will work with you to accomplish an outstanding Life Floor installation on a time line that accommodates your schedule. We recommend using Certified Life Floor installers to ensure the best possible installation.

Installation FAQs

What type of adhesive should be used?

A commercial grade contact cement is the best option for most applications. We have a network of distributors of this adhesive and can connect you with one or more distributors based on the project location. In low-traffic applications or as a fallback, you can use DAP contact cement from home improvement retailers.

Can you install Life Floor over compacted aggregate sub-base?

No. Appropriate substrates include concrete, new wood, plastic, metal, and fiberglass. Essentially, Life Floor requires a substrate that is: dry, well-intact (not crumbling, rotting, or coming up), and cleaned of debris, dirt, oils, waxes, and sealers. If these conditions are met, then Life Floor can be installed.

How is the contact cement applied?

The contact cement is painted on with a paint brush or paint roller to both the sub-base material and the back of the tile, allowed to cure for 10-15 minutes depending on the environmental conditions (warmer temperatures will require less time), then the tile is placed. This offers a secure bond. If the tile fails to adhere, the installer will know immediately and will need to wait a bit longer for the adhesive to cure before the tile is placed. Read the label on the contact cement for additional instructions.

How is design work done?

Designs can be waterjet cut from a CAD or vector drawing and prefabricated for quick and easy installation. Inlaid designs can also be cut and installed on site. Generally, the installation crew cuts out the desired shapes and then inlays the void with a contrasting color. We require certified installers to perform inlaid design work. For repetitive designs (footprints, paw prints, logos), die cut shapes can also be created.

Can Life Floor be installed underwater?

Yes, Life Floor can be installed underwater and remain underwater for many years without replacement. Tiles are installed while the pool is completely empty, clean, and dry using a synthetic rubber waterproof contact cement that can withstand underwater environments.

Can you install Life Floor over Poured in Place rubber?

It depends on the current condition of the Poured-in-Place (PIP). Tiles can adhere to rubber, but if the PIP is coming apart, our tiles will not have a solid enough substrate to adhere to. The longevity of the Life Floor install would be directly linked to how the PIP performs over time. Life Floor would provide a sealant for the PIP, but if the PIP starts breaking down over time, then Life Floor tiles will also become loose.

Are there multiple ways to handle drains?

For existing drains, a removable cover is developed on site to provide a consistent look. The alternative is to leave the current drains exposed. For 3/8" tile, transition edges will be necessary to slope the edge toward the drain. For 3/16" tile, transition edges are not required since there will not be a trip hazard.

Maintaining Life Floor

Life Floor requires consistent maintenance and proper cleaning. Not following these guidelines may result in damaged Life Floor or voiding of the Life Floor warranty.

Routine Maintenance

Areas exposed to only barefoot traffic can be cleaned on an as-needed basis with Life Floor Cleaners. For areas exposed to shoe traffic, Life Floor should be cleaned at least once a week. A standard cleaning schedule can be found in the Cleaning Guide. When cleaning Life Floor, use a light or medium scrubbing machine with vacuum recovery or non-metallic brushes. Stiff brushes or brushes that contain abrasives may damage Life Floor. Do not use metal brushes or grit-coated, aggressive brushes of any kind on the tile surface.

Cleaning Solutions

We recommend Life Floor Cleaners for removing dirt, foot oils, food grease, rust, and mineral deposits. Effective alternatives include bacteria-killing agents such as hydrogen peroxide, bleach, ammonia, or citrus. Do not use any type of sealer or wax product, as these will coat the tile surface with a slippery residue.

Preventative Maintenance

Life Floor tiles are durable and designed to withstand high volumes of barefoot traffic. However, Life Floor tiles may be scratched or cut by sharp, heavy, or abrasive objects. Should a tile become damaged, replacement is generally easy, but force will be required to remove an adhered tile. We recommend the use of plastic or natural bristle scrub brushes to clean the tile surfaces. We also recommend the use of plastic or wood furniture instead of heavy, metal furniture. Deck furniture should have wide and flat feet, or broad furniture coasters secured to the bottom of deck furniture feet. If mechanical lifts or heavy objects are to be transported or placed on top of Life Floor, it may be necessary to protect the deck surface with plywood or Masonite. Do not allow burning or extremely hot objects to come in contact with Life Floor tile. To help remind your guests about acceptable footwear and use of Life Floor, we have created signs that you may purchase upon request.

Cleaning Life Floor

Life Floor offers a full line of cleaning supplies that are designed specifically for Life Floor tiles. Our Life Floor Cleaner suite of products includes our Peroxide Cleaner, Degreaser Cleaner, and Mineral Deposit Remover.

The Life Floor cleaning process has three easy steps: Apply, Agitate, Recover. Use our online guide found on lifefloor.com/cleaning for specific cleaning guidelines and schedules.

Cleaning FAQs

How often do I need to clean Life Floor?

If an area is exposed to shoe traffic, Life Floor should be cleaned on a weekly basis. If an area has only barefoot traffic (splash pads, spray parks) we recommend cleaning Life Floor on an as-needed basis. Areas with constant water flow will require less cleaning. We generally recommend using Mineral Deposit Remover once per season. In some cases, excessive use of aerosol sunscreen may require cleaning with Degreaser Cleaner on a weekly basis.

How often do I use each Life Floor Cleaner?

This also depends on the application. Each cleaner provides a different cleaning solution. We generally recommend using Degreaser Cleaner on a weekly basis to remove dirt and oil, but can be used on an as-needed basis for barefoot-only areas. Peroxide Cleaner and Mineral Deposit Remover may be used on an as-needed basis.

How do I clean in between the tiles?

We recommend using our Life Floor Cleaners and following the three-step cleaning process of Apply, Agitate, Recover. Cleaning between the tiles is best accomplished with a pressure washer and wet vacuum.

What is the white film on the tiles and how do I clean it?

Mineral deposits can appear as a white film or even a crusty yellow coating. If mineral deposits are identified and addressed early, they are easily removed with the Mineral Deposit Remover. Follow the Apply, Agitate, Recover process to remove deposits.

Can Life Floor be permanently stained?

To date, we have not found a chemical that permanently stains Life Floor. However, Life Floor may become discolored if extremely harsh chemicals—such as muriatic acid—are allowed to sit on the tile for an extended period of time.

Are there any chemicals I should avoid using on Life Floor?

Avoid chemicals such as paint, trichloroethylene, and muriatic acid. While Life Floor is chemical resistant, solvents may attack the adhesive beneath the tiles. When using solvents to remove stains, avoid flooding butt joints with the chemicals listed above. If solvents do soak into the butt joints, clean the area with our Degreaser Cleaner and use vacuum recovery.

Solvents to avoid for contact cement: all solvents, including mineral spirits and gasoline.

How do I remove gum from Life Floor?

First, apply ice to harden the gum. Once the gum is hardened, carefully lift it away with a putty knife or similar scraper. Use caution, as Life Floor can be damaged by aggressive scraping. Any remaining gum residue can be removed by applying WD-40 with a cloth.

Replacing Life Floor

Replacement is easy, quick, and economical. Should Life Floor become damaged, users are able to replace individual tiles instead of entire floors.

First, remove the damaged tile by lifting tile corners with a razor scraper or putty knife. Pull the tile away from the floor substrate until completely free. Next, scrape and remove any leftover adhesive from the substrate surface with a putty knife or a 4-inch razor scraper. After removing leftover adhesive, measure and, with a utility knife, cut a new Life Floor tile to the size of the replacement area. Finally, adhere tile to the substrate using waterproof contact cement found at your local hardware store. Follow the instructions on the back of the contact cement container for tile placement and adhesion process. We recommend the following adhesion process:

With a general paintbrush, evenly apply adhesive to the back of the replacement tile and to the substrate. Let both surfaces cure for approximately 10-15 minutes until the cement is tacky or slightly dry to the touch (see cement label for curing times). Begin laying down the replacement tile by aligning the new tile edge with the surrounding tile edges. Ensure each corner and edge are secure by applying pressure with your thumb and index finger. To ensure adhesive is secured to the substrate, use a floor roller to apply pressure to the entire tile area.

Technical Data

Extensive testing has been performed on Life Floor tile, including slip resistance, flame and smoke spread, water and chemical resistance, UV and Ozone stability, temperature stability, and mold resistance. Request full testing reports and MSDS online at lifefloor.com.

Traction/Slip-resistance

ASTM 303-93(2008) BPN Value when wet: Ripple 42-45; Slate 40-42; Rustic Board 39-41

Cushioning/Impact Attenuation

ASTM F 1292-10; Standard Specification for Impact Attenuation of Surface Systems Under and Around Play Equipment : 3/8" tile: 1'-0", 7/8" tile: 4'-0".

Water Permeability

ASTM F1551-09: Standard Test Methods for Comprehensive Characterization of Synthetic Turf Playing Surfaces and Materials: Suffix-DIN 18-035, Part 6: Water Permeability of Synthetic Turf Systems and Permeable Bases: Product will not allow vertical drainage

Flammability

ASTM E648-03 Critical Radiant Flux Class 1 interior floor finish rating
ASTM E84-04 Flame Spread Index 255, Smoke Development Index 300

Physical Properties

UV Stable, antimicrobial, closed cell, chemical resistant

© 2017 MNY Group, LLC

Life Floor is a Registered Trademark of MNY Group, LLC. All Rights Reserved.

For more information, and for the latest product information, always visit www.lifefloor.com

Life Floor is made in the USA in South Dakota

2010 East Hennepin Ave #8
Building 8, Suite 206
Minneapolis, Minnesota 55413

612.567.2813

solutions@lifefloor.com

Photography by Edward Addeo,
Jennifer Ceci, and Garrett Reid



LIFE FLOOR

Life Floor® is a registered trademark of MNY Group, LLC.
©2017 MNY Group, LLC. All rights reserved.