

LIFE TM

FLOOR

lookbook 2016



In 2015, We Brought Manufacturing Home.

Life Floor is now made in the USA.

Since July 1, 2015, Life Floor has been manufactured in Madison, South Dakota, in coordination with Falcon Plastics.

When our customers began requesting more custom orders and faster turnaround times, we decided to implement a Just-in-time or “lean manufacturing” system that dramatically shortened lead times and increased our flexibility with customization.

While lean manufacturing can be accomplished overseas, we discovered that in order to serve our domestic customers as quickly as possible, the best option was to start a lean manufacturing line in the United States. In doing so, we eliminated the costly factors of time, expense, and environmental impact associated with making and shipping our product overseas.

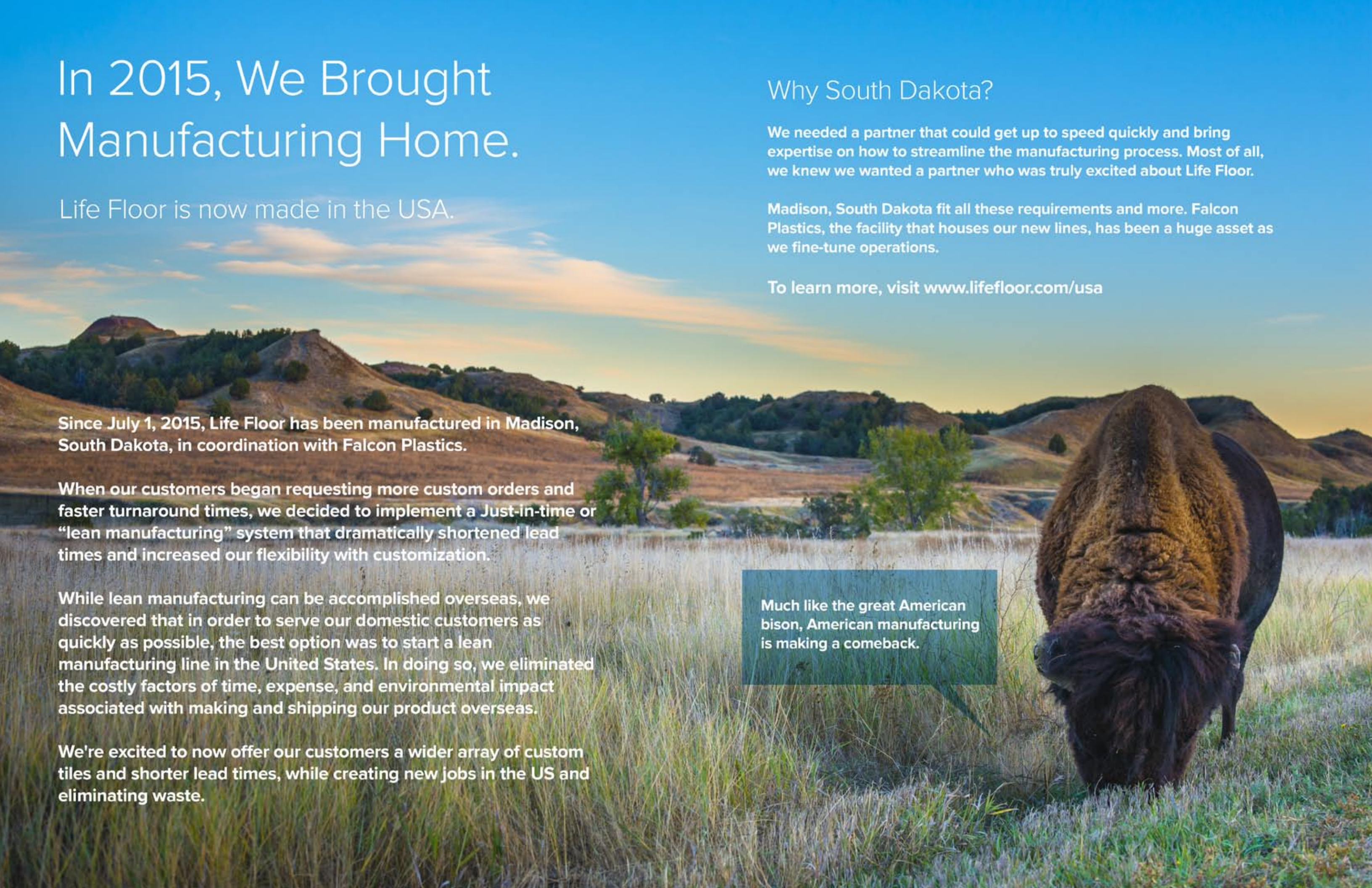
We're excited to now offer our customers a wider array of custom tiles and shorter lead times, while creating new jobs in the US and eliminating waste.

Why South Dakota?

We needed a partner that could get up to speed quickly and bring expertise on how to streamline the manufacturing process. Most of all, we knew we wanted a partner who was truly excited about Life Floor.

Madison, South Dakota fit all these requirements and more. Falcon Plastics, the facility that houses our new lines, has been a huge asset as we fine-tune operations.

To learn more, visit www.lifefloor.com/usa



Much like the great American bison, American manufacturing is making a comeback.



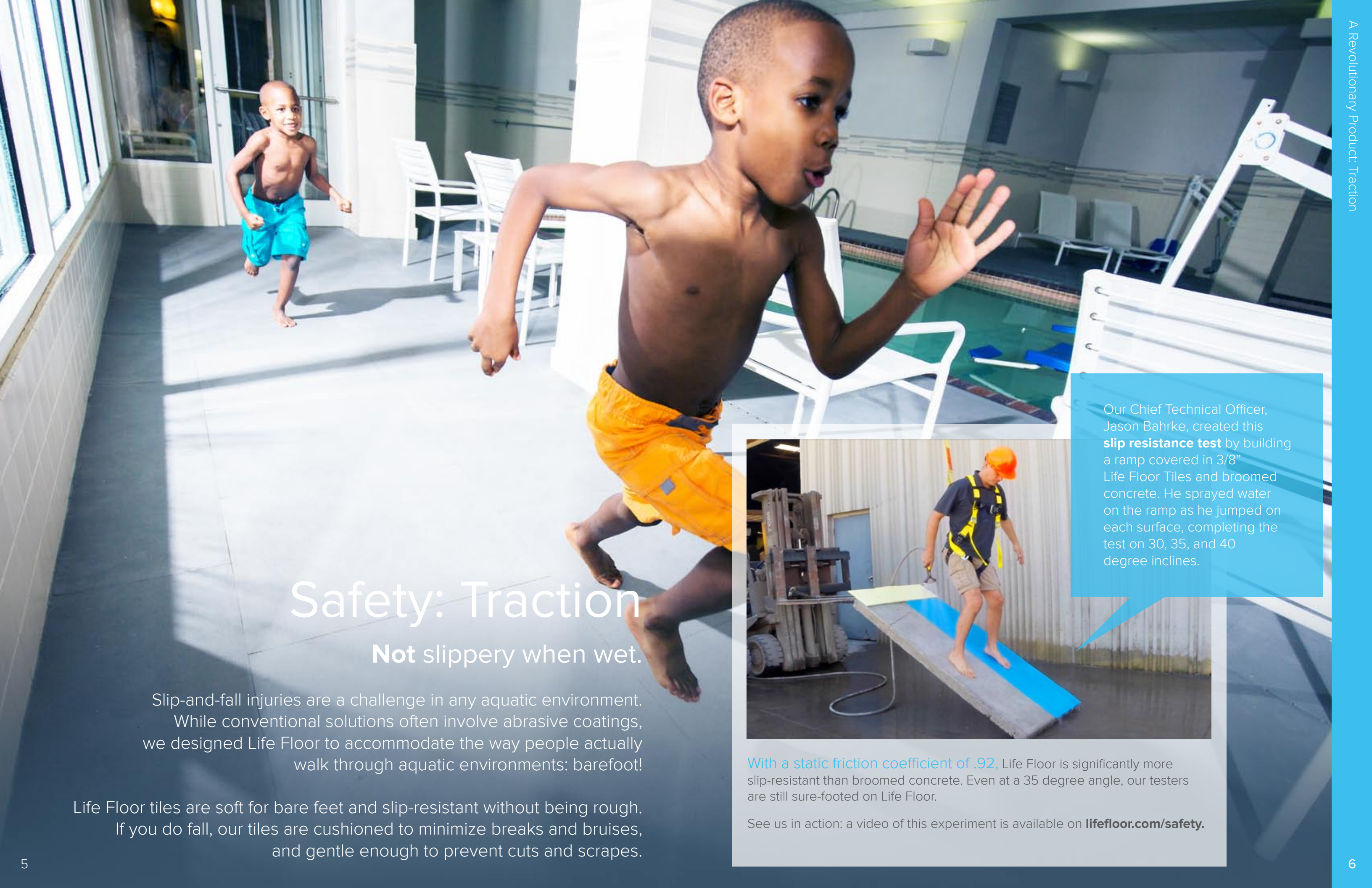
LIFE FLOOR™

- 5** A Revolutionary Surface
- 11** Designing with Life Floor
- 27** Pool Decks
- 43** Splash Pads
- 49** Other Applications
- 65** Technical Support
- 77** Technical Data
- 78** Contacting Life Floor

People love to walk on Life Floor.

We believe floors should be beautiful, comfortable, and engineered for safety, even when wet. That's why we manufacture Life Floor for swimmers on pool decks, kids playing at water parks, seniors getting out of showers, and anyone who expects more from their floors, especially while barefoot.

What makes Life Floor so extraordinary?



Safety: Traction

Not slippery when wet.

Slip-and-fall injuries are a challenge in any aquatic environment. While conventional solutions often involve abrasive coatings, we designed Life Floor to accommodate the way people actually walk through aquatic environments: barefoot!

Life Floor tiles are soft for bare feet and slip-resistant without being rough. If you do fall, our tiles are cushioned to minimize breaks and bruises, and gentle enough to prevent cuts and scrapes.



Our Chief Technical Officer, Jason Bahrke, created this **slip resistance test** by building a ramp covered in 3/8" Life Floor Tiles and broomed concrete. He sprayed water on each surface, completing the test on 30, 35, and 40 degree inclines.

With a static friction coefficient of **.92**, Life Floor is significantly more slip-resistant than broomed concrete. Even at a 35 degree angle, our testers are still sure-footed on Life Floor.

See us in action: a video of this experiment is available on lifefloor.com/safety.

Safety: Absorbing Impact

Whether you're running, jumping, playing, or just relaxing, softer floors make life more comfortable.

Life Floor tiles are durable but soft, meaning fewer broken plates, fewer broken phones, and most importantly, fewer bumps and bruises. In fact, we've virtually eliminated slip-and-fall injuries in some commercial facilities.

How cushioned are Life Floor tiles?

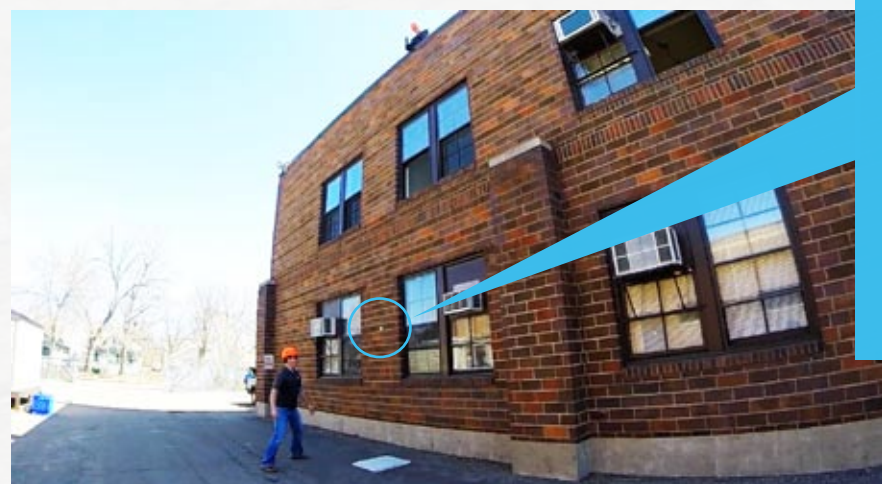
Remember that science project, where you tried to drop an egg without letting it break? Of course it didn't work. And it's not the egg's fault, either. The floor was way too hard. What if you could change that?

That's an egg. It's bouncing.

Our 3/8" tile has a critical fall height of 1 ft, but most eggs won't break when dropped from 3 ft above. Seriously. Order a sample and try it.

You can even layer Life Floor to absorb greater impact. Our testers have dropped eggs onto 1 1/4" Life Floor from our roof, 25 ft above. The egg bounced away, intact.

Visit lifefloor.com to see the video!



RepelCell™ Technology

Life Floor tiles repel water and other liquids, so they're perfect for aquatic environments. Our patented RepelCell™ technology makes Life Floor non-absorbent, antimicrobial, stain-proof, and chemical resistant.



Totally Waterproof

Life Floor tiles are impervious. They will not absorb water or other liquids, and underwater applications last just as long as above-water applications.



Food stains before and after a 24 hour period



Virtually Impossible To Stain

We've tested tiles with food and chemical spills, and we've yet to find anything that stains Life Floor. Tiles are even easier to clean with our suite of Life Floor Cleaners.

Incredibly Antimicrobial

Closed-cell technology helps prevent the growth of harmful bacteria and mold.
(Long-standing water and improper cleaning may result in dirty tiles.)

Design

As versatile as your imagination

When you design with Life Floor, you don't have to sacrifice style for safety. With a range of color, texture, and thickness options, our tiles are versatile enough for virtually any environment.

How will Life Floor enhance your space?



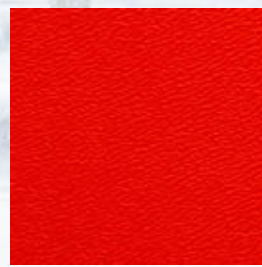
Sepia



Terra Cotta



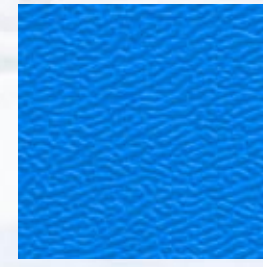
Maple



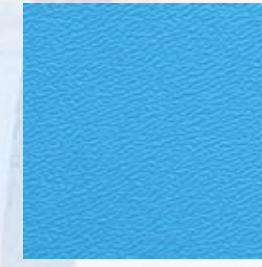
Firecracker



Ocean



Bluebird



Aviator



Iceberg



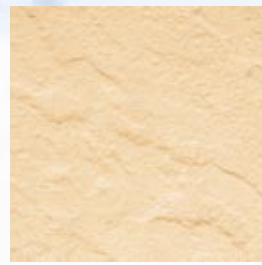
Tiki



Mojave



Gobi



Sandbar



Iris



Thistle



Heron



Foghorn



Sandstone



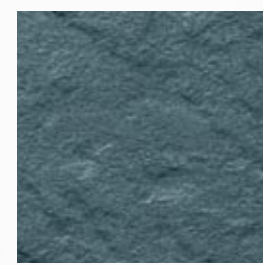
Ivory



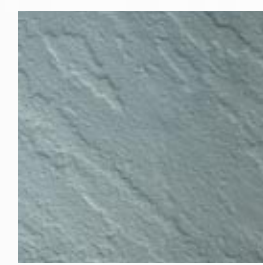
Porcelain



Coral



Kestrel



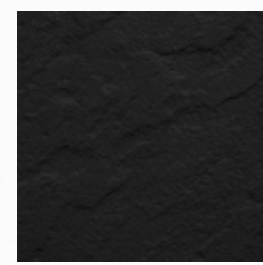
Bluestone



Boulevard



River Rock



Onyx



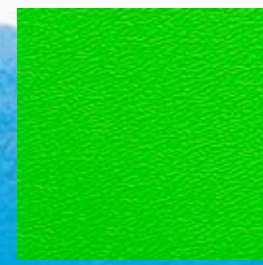
Evergreen



Olive



Turquoise



Lily pad



Limelight



Sunshine

Design with Color

Life Floor uses an extensive color palette to meet the specific design and theming needs of facilities. Our tiles last in extreme hot and cold conditions both indoors and outdoors. For maximum comfort, we suggest our lightest color tiles for outdoor use.

Design with Texture



Slate

Slate mimics natural stone, adding classic style to your pool decks, bathrooms, showers, and walkways.



Ripple

Ripple texture makes aquatic environments playful and safer. Popularly used in underwater applications such as splash decks, zero-depth entries, slide pads, and around spray features.



Rustic Board

Add rustic elegance to pool decks, patios, stairways, slide towers, and docks, without the splinters.



Wood Grain

Designed to be used with Rustic Board, 3/16" Woodgrain can be easily wrapped around stairways and slide towers.



Clay

A subtle texture ideal for pool coping, depth markers, and other accent applications.



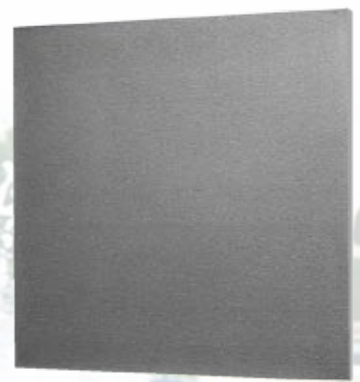
Life Floor literature claims to minimize pool deck-related injuries, but in fact it has eliminated them in our park.
- Metropolis Resort, Eau Claire, WI

Design with Tile Thickness

Life Floor tiles are available in 3/16", 3/8" and 7/8" thickness options.

Why is tile thickness important?

As tile thickness increases, so does critical fall height and safety. For aquatic environments with young children, we recommend using our 3/8" tile with Ripple, our most slip-resistant texture.



3/16"
Our most economical tile, ideal for coping and stairways.

Dimensions: 24" x 24" x 3/16"



3/8"
Our 3/8" tile has a critical fall height of 1'-0". Ideal for splash-pads, zero-depth entries, and other aquatic recreation areas.

Dimensions: 24" x 24" x 3/8"



7/8"
Our 7/8" tile has a critical fall height of 4'-0". Ideal for play areas with toddlers and small children, we also recommend using 7/8" tile at the bottom of slides and around play features.

Dimensions: 24" x 24" x 7/8"

On and Off the Grid

Life Floor is manufactured in squares, but our tiles can be cut, arranged, and rearranged to create a remarkable number of designs, including rectangles, triangles, and curves.

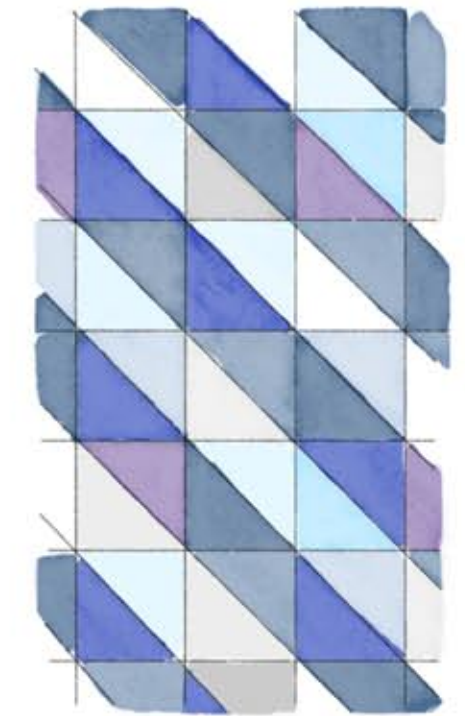
Have a complex, narrative design in mind? Create a die-cut pattern, or even waterjet our tiles into virtually any shape.

Certified installers are trained to apply our tiles in any layout.

Here, 3/8" Mojave and Sepia tiles are matched with Sepia transition strips to create an elegant, smooth finish around the pool and jacuzzi at Dolphin Bay.



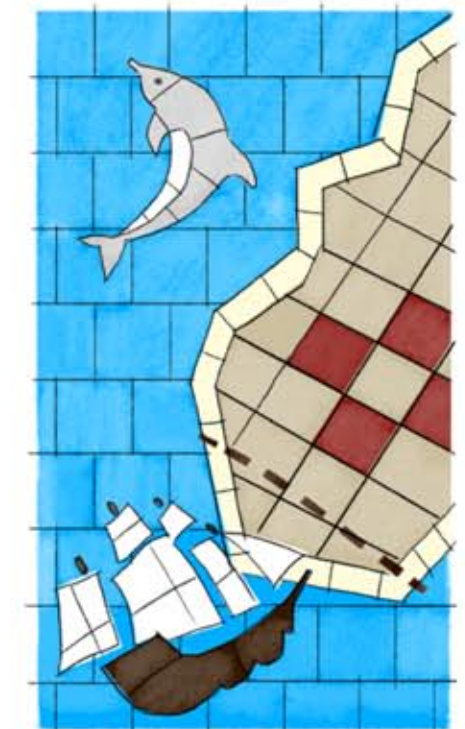
Create a gradient look by carefully selecting tiles from our expansive palette.



Contrasting light and dark triangles can create stripes or even pinwheels.



Die-cut designs are a cost-effective strategy for repeating patterns or logos.

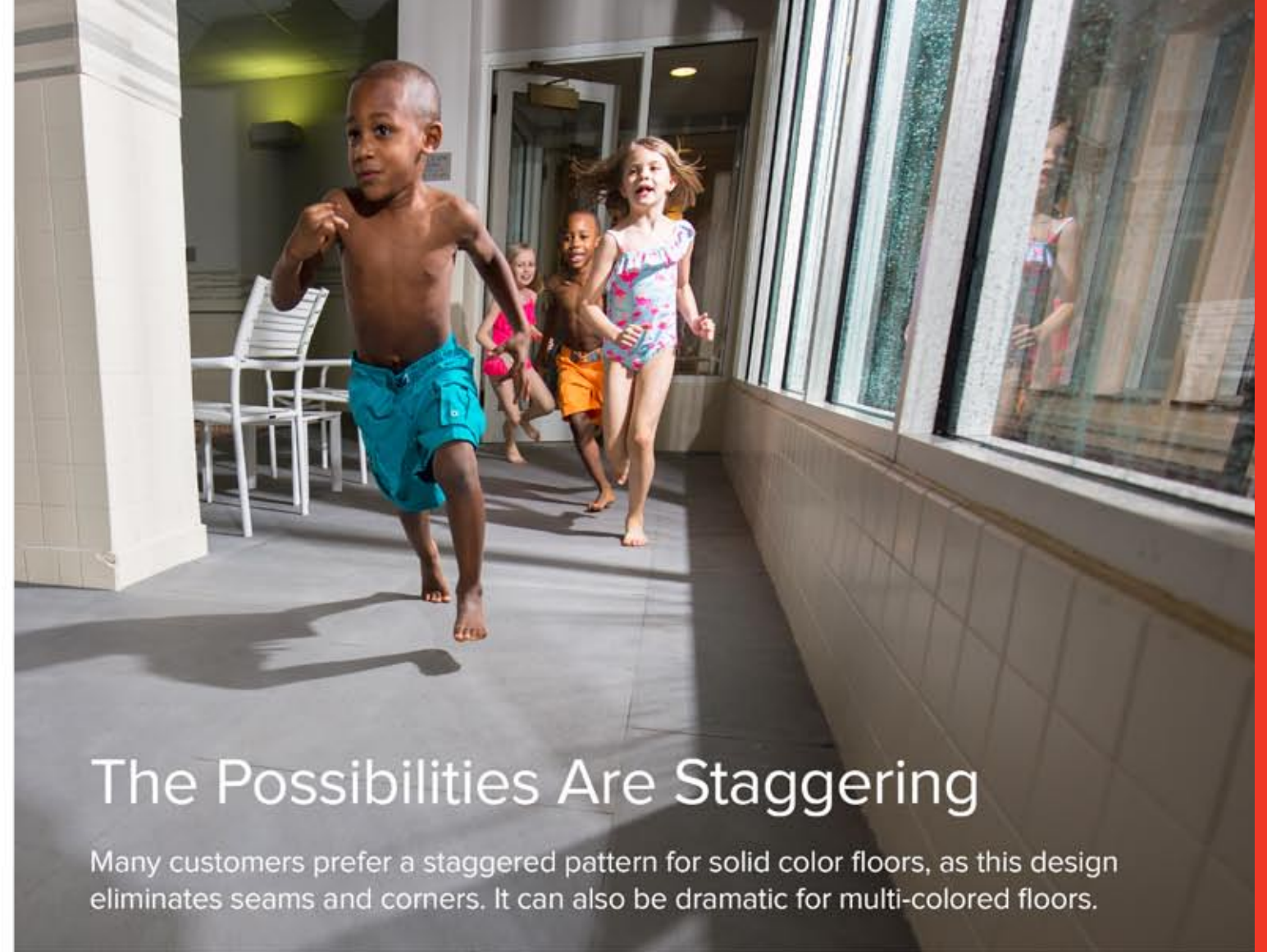


Waterjet cut designs are only limited by your imagination.



It's Hip To Be Square

The grid and the checkerboard pattern will always be classics, but here's a few more ideas our designers came up with.



The Possibilities Are Staggering

Many customers prefer a staggered pattern for solid color floors, as this design eliminates seams and corners. It can also be dramatic for multi-colored floors.



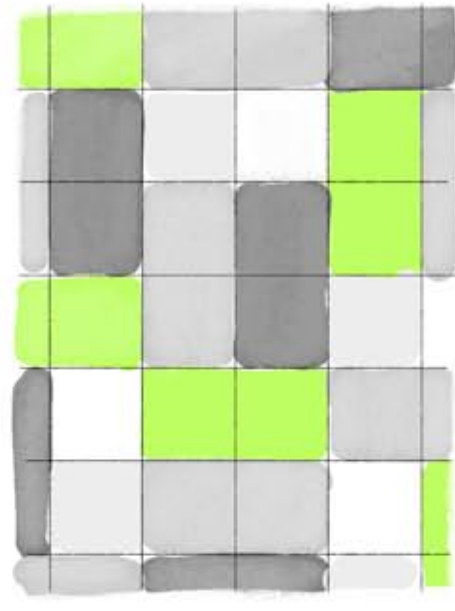
Mottled Colors with

Sepia, Tiki, Mojave, Gobi, and Sandstone



Gradient Steps with

Kestrel, Bluestone, Heron, and Porcelain



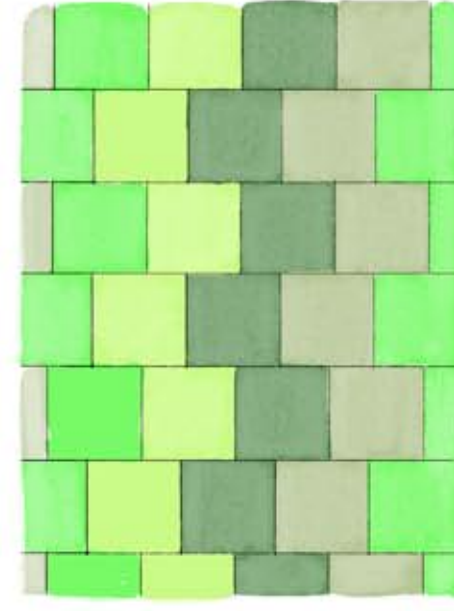
Green Accents with

Boulevard, River Rock, Foghorn, Porcelain, and Limelight



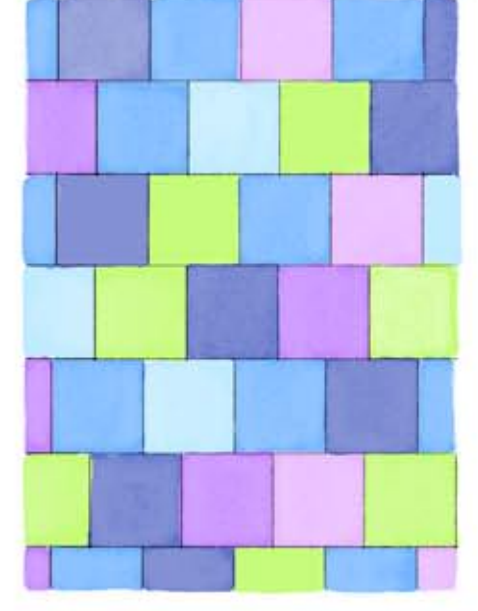
Mottled Red with

Sepia, Maplev, Coral, and Sandstone



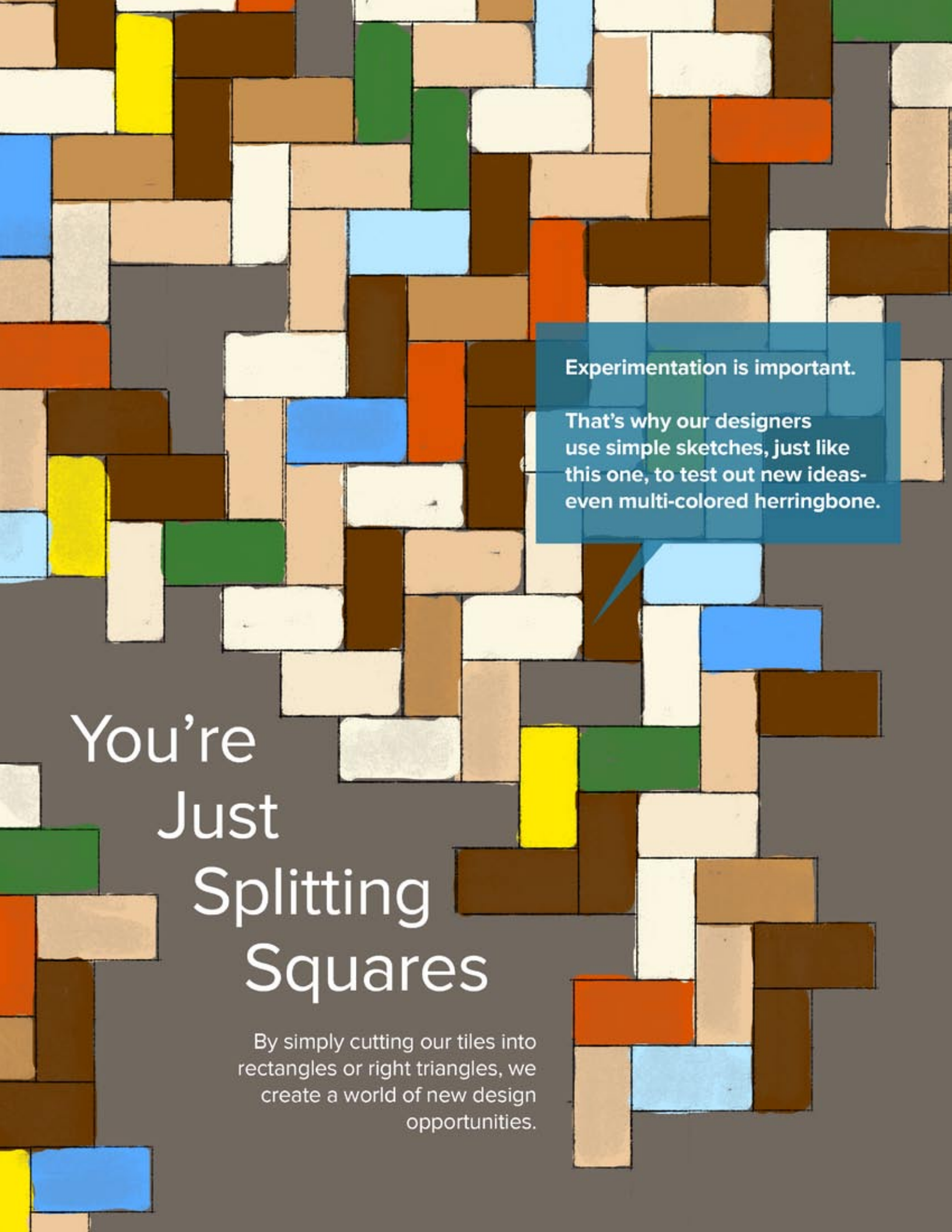
Staggered Stripes with

Evergreen, Olive, Lilypad, and Limelight



Irridescence with

Ocean, Blue bird, Aviator, Iris, Thistle, and Limelight



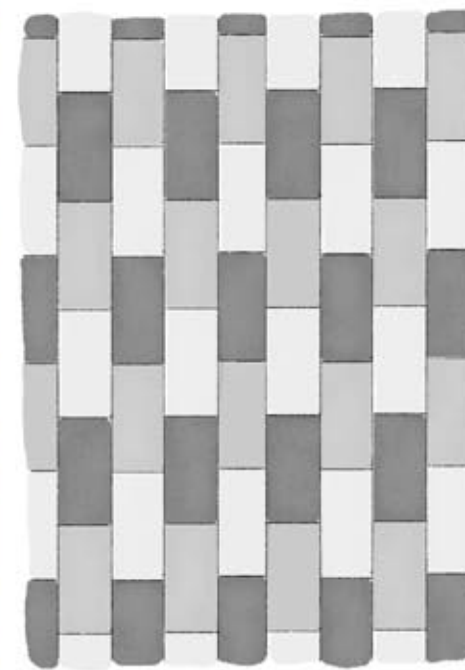
Experimentation is important.
That's why our designers use simple sketches, just like this one, to test out new ideas—even multi-colored herringbone.

You're Just Splitting Squares

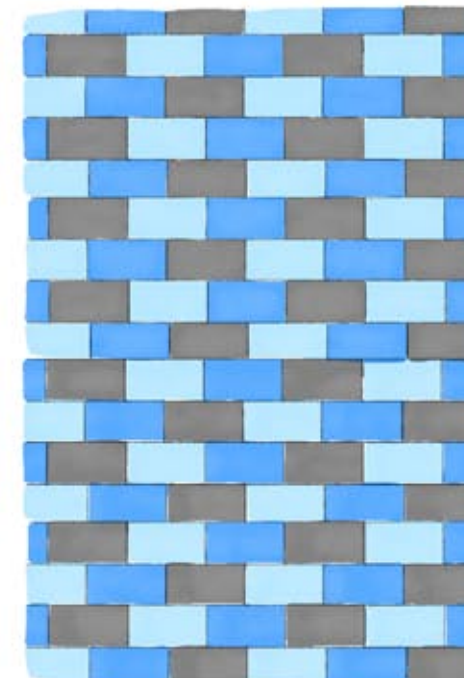
By simply cutting our tiles into rectangles or right triangles, we create a world of new design opportunities.



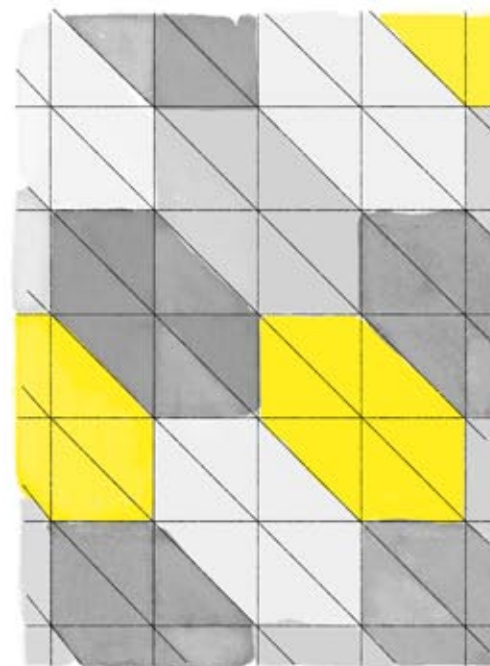
Spanish Tiles with
Terra Cotta and Maple



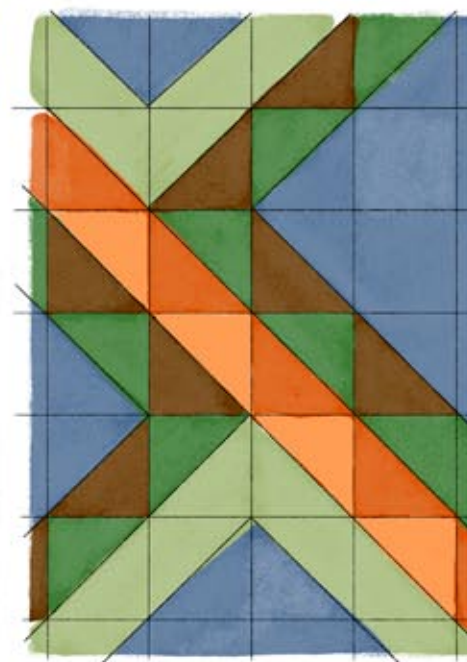
Milano with
Boulevard, River Rock, and Foghorn



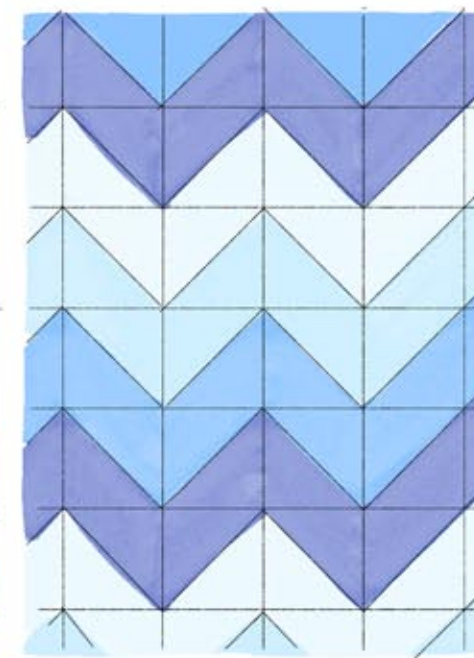
Subway with
Boulevard, Bluebird, and Aviator



Stretch Hexagons with
Boulevard, River Rock, Foghorn, and Sunshine



Geometric Snakes with
Evergreen, Sepia, Olive, Maple, and Coral



Waves with
Ocean, Bluebird, Aviator, and Iceberg



Sepia lion on Bluebird

Inlaid Design

Custom splash pads can be designed using vector or CAD drawings. Working from a digital file, tiles are run through a water jet cutter and assembled on-site.

Our team will work with you to create a floor that matches the rest of your park.

The possibilities are endless.



Treasure map; various colors

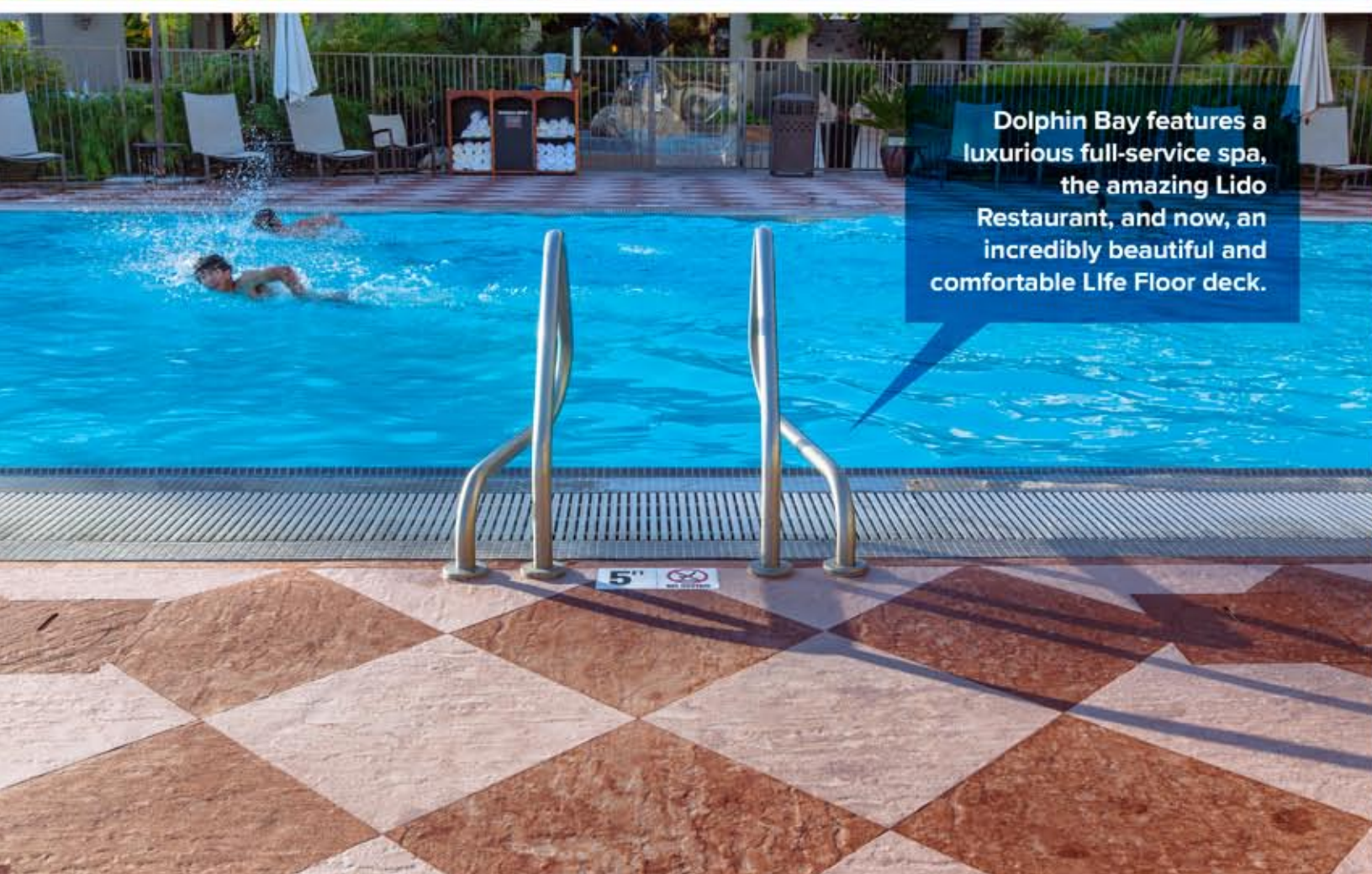
Safety Never Looked This Good

At the paradisaal Dolphin Bay Resort & Spa in Pismo Beach, California, guests enjoy swimming and sunbathing with an incredible view of the Pacific Ocean, on a Life Floor deck perfectly designed to integrate with their lush surroundings.



Outdoor Decks

Dolphin Bay Resort & Spa
Pismo Beach, California
Mojave and Sepia Slate



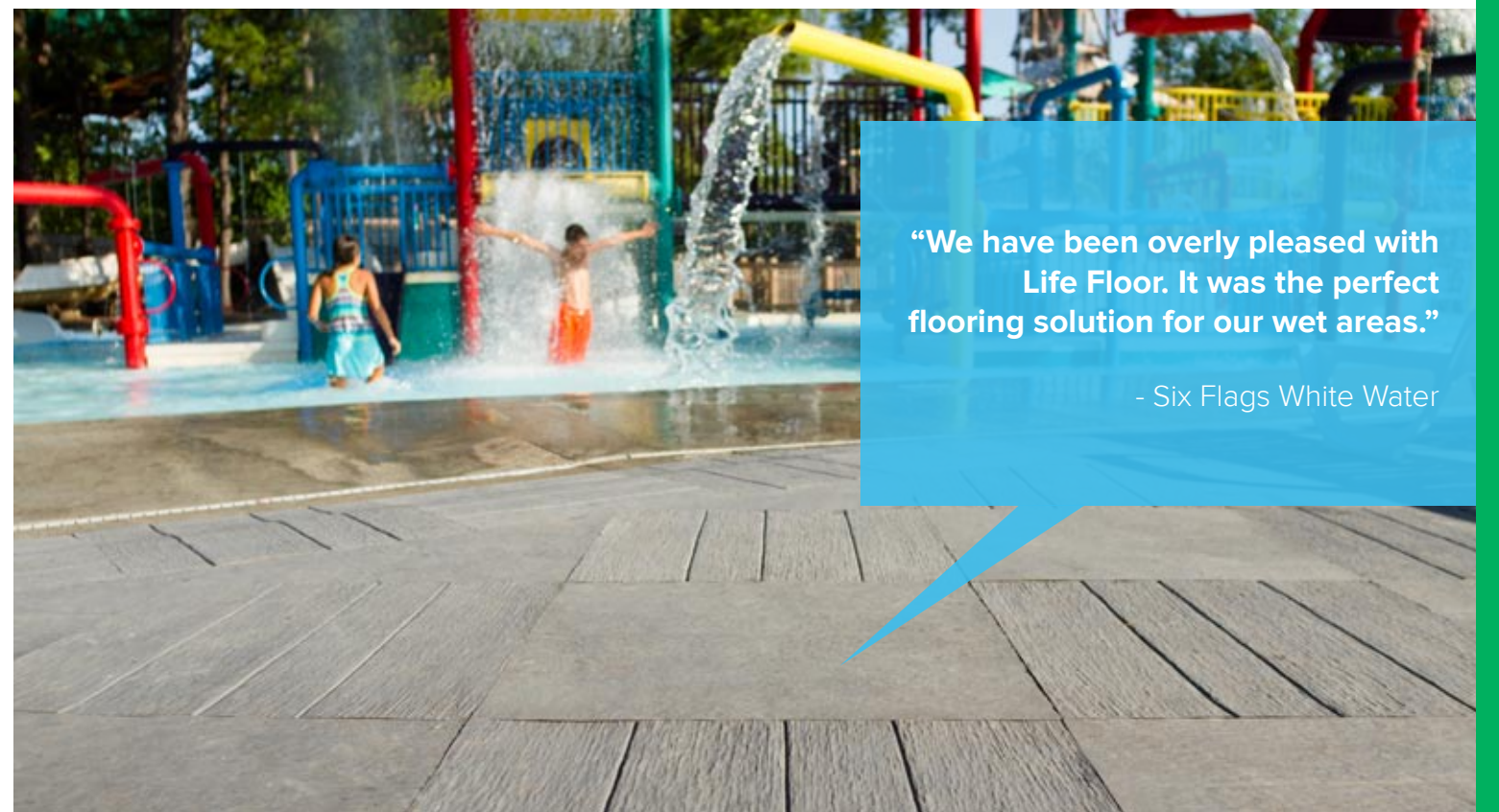
Dolphin Bay features a luxurious full-service spa, the amazing Lido Restaurant, and now, an incredibly beautiful and comfortable Life Floor deck.





Outdoor Decks

Six Flags White Water
Marietta, Georgia
River Rock Rustic Board



“We have been overly pleased with Life Floor. It was the perfect flooring solution for our wet areas.”

- Six Flags White Water

In 2014, the City of Dublin, Ohio began a search for the best surface to renovate their beautiful 8,000 square foot municipal pool. After a nationwide search, the answer was obvious. They chose Life Floor.

Proven for Aquatics

Indoor Decks

Dublin Community Recreation Center
Dublin, Ohio
Mojave Slate

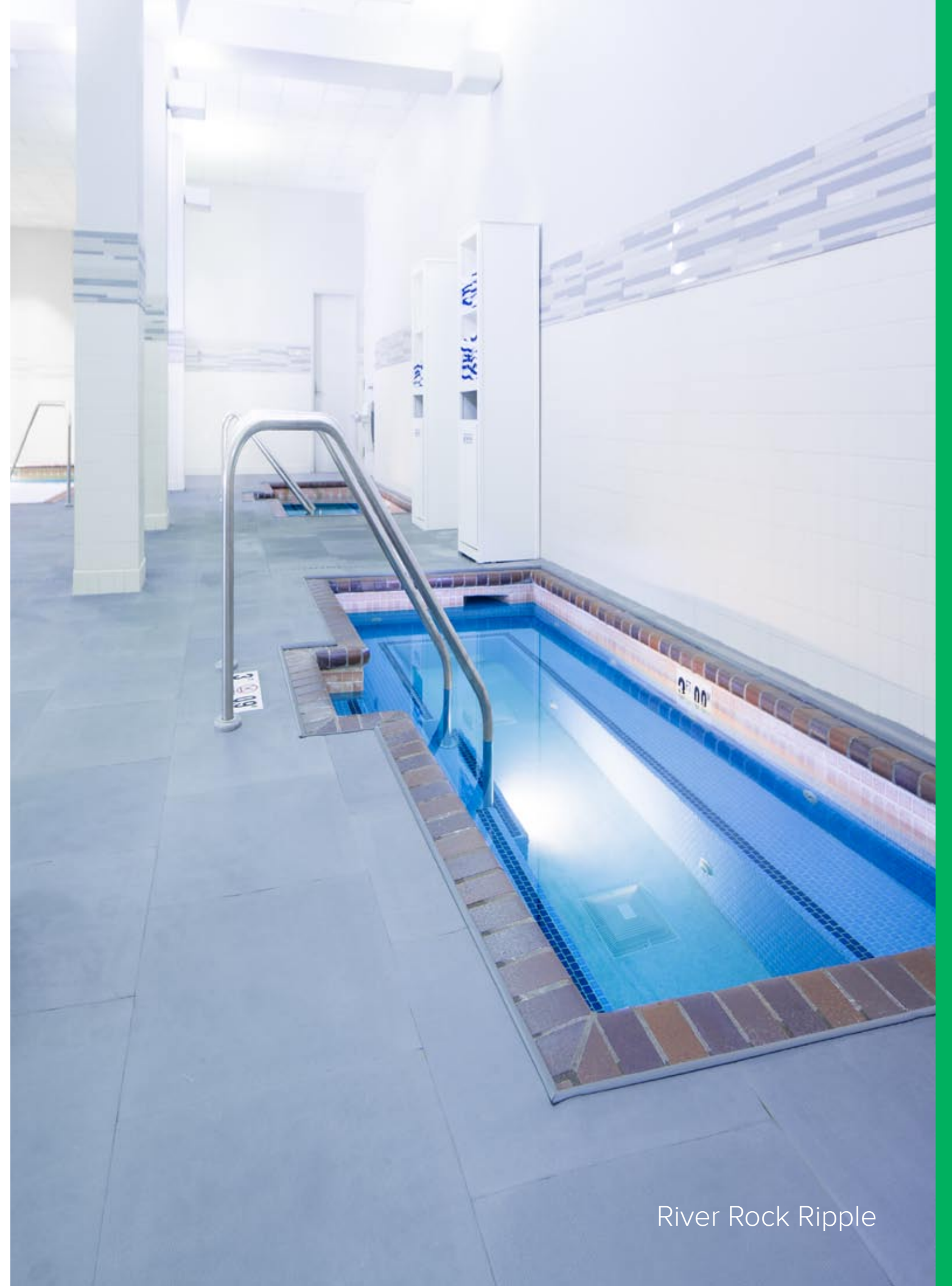


Indoor Decks

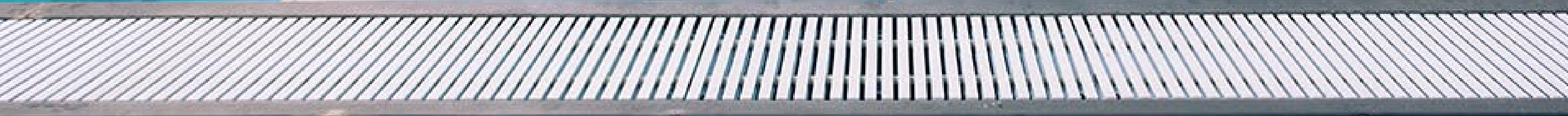
Country Inn & Suites by Carlson
Bloomington, Minnesota



Country Inn & Suites by Carlson
Bloomington, Minnesota



River Rock Ripple



American Family Fitness
Glendale, Virginia
Boulevard Slate

Fitness + Athletics

Put your decks **ahead**
of the competition



American Family Fitness
Glendale, Virginia
Boulevard Slate

Splash Pads: Custom Design

Splash Pads: Excellence through collaboration

In 2014, Westfield, New Jersey brought our team an exciting challenge. They wanted to upgrade the splash pad at their Memorial Pool Complex, but they also wanted to preserve the existing floor design, which had been designed and chosen by members of the community. Life Floor was able to replicate the existing design with a mixture of our custom colors, using our most slip-resistance texture, Ripple, creating a beautiful, safer splash pad even the smallest members of the community love.



Splash Pads

Westfield Memorial Pool Complex
Westfield, New Jersey



“Our community loves Life Floor. Everyone who visits the splash pad says it feels comfortable and looks beautiful. It is the best surfacing we’ve ever had.”

- Westfield Memorial Pool





Splash Pads

Bearfoot Island, Wilderness Resort
Wisconsin Dells, Wisconsin



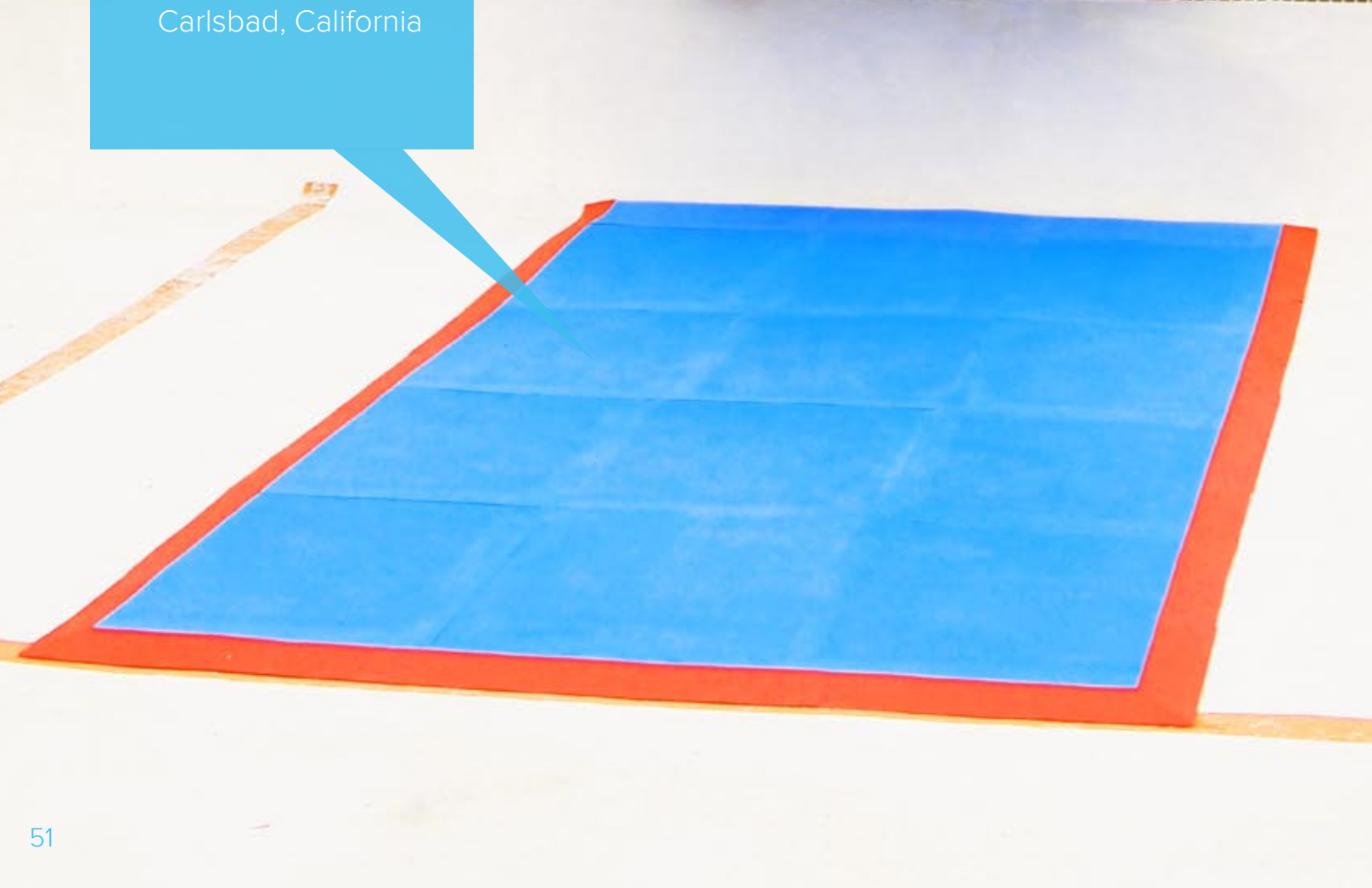
Spray Parks
Lion Country Safari
Loxahatchee, Florida

Life Floor goes wherever you find bare feet and wet floors.

Your feet will be happiest on our tiles, and our tiles are at their best wherever floors are wet and feet are bare. Our most popular applications include: spray parks, slide pads, lily pad landings, slide towers, pool decks, and zero depth entries. See some of our recent projects on the following pages.



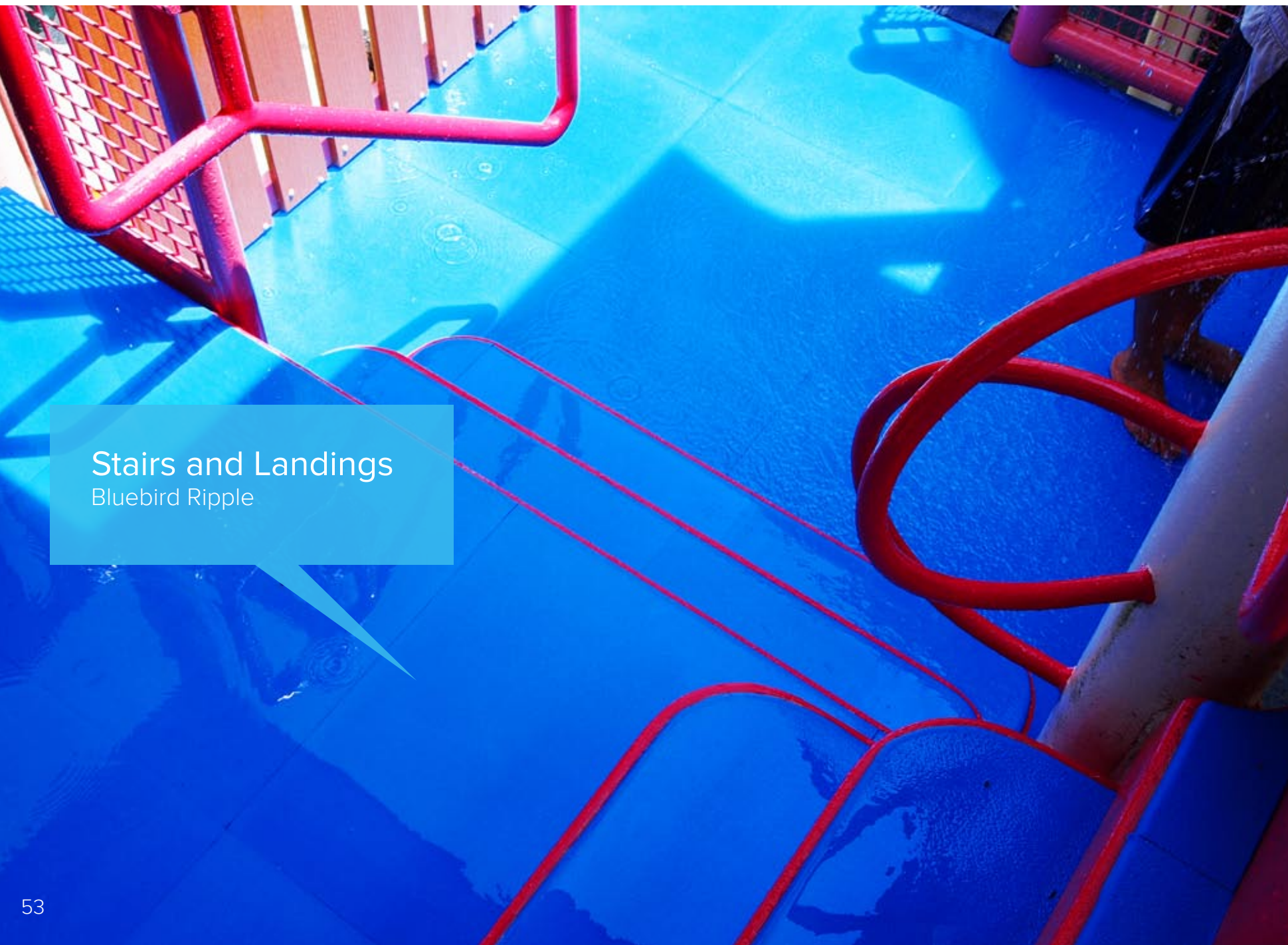
Slide Pads
LEGOLAND®
Carlsbad, California



Zero-depth Entry Lazy Rivers
Elk Grove Parks District
Elk Grove, Illinois



Zero-depth Entry Kiddie Pools
Massanutten Resort
McGaheysville, Virginia



Stairs and Landings
Bluebird Ripple



Spray Features
Wilderness Resort
Wisconsin Dells, Wisconsin



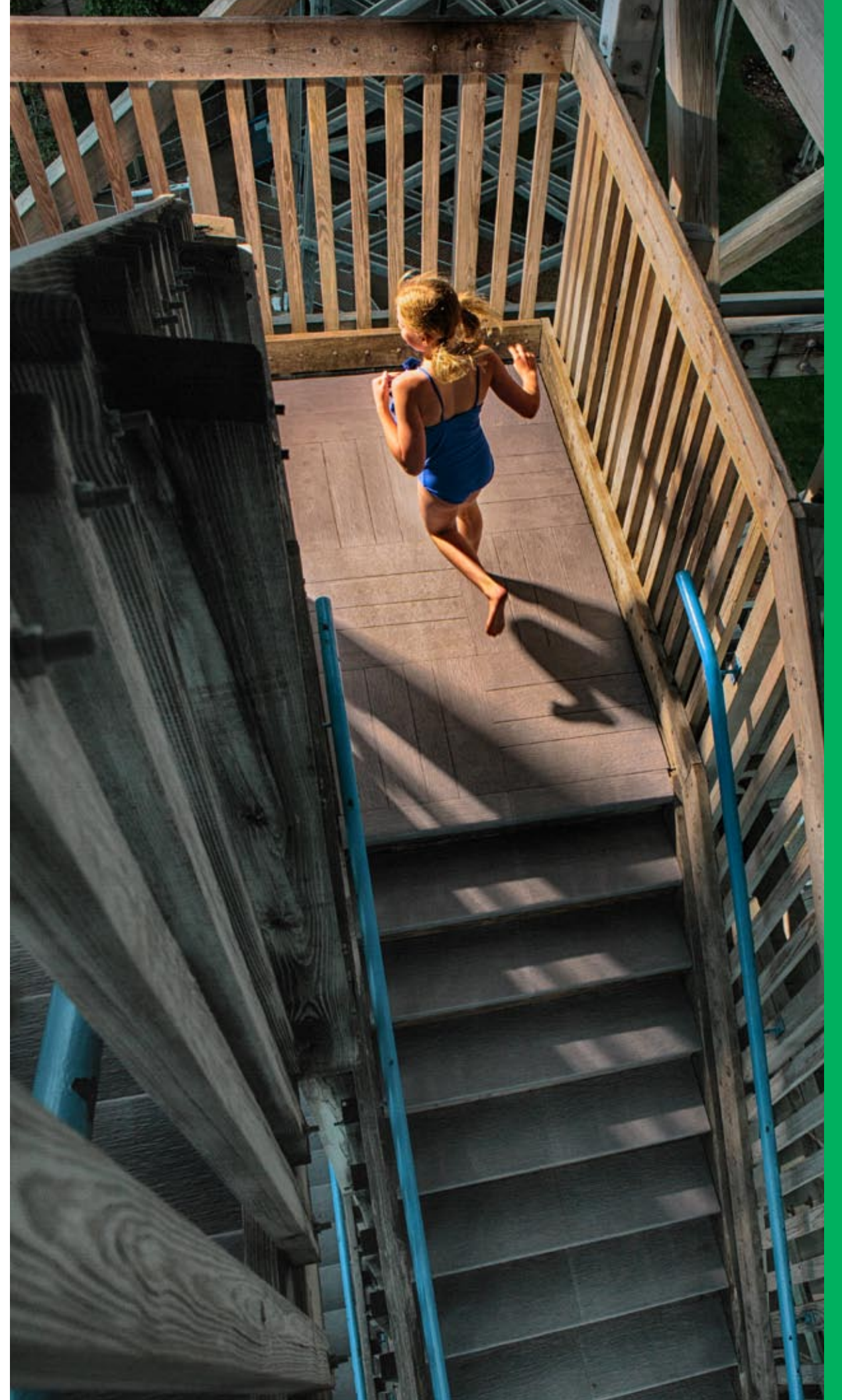
Around Attractions
Six Flags Great America
Gurnee, Illinois

Lazy Rivers
City of Dublin Community Center
Dublin, Ohio
Mojave Slate





Slide Towers
River Rock Rustic Board





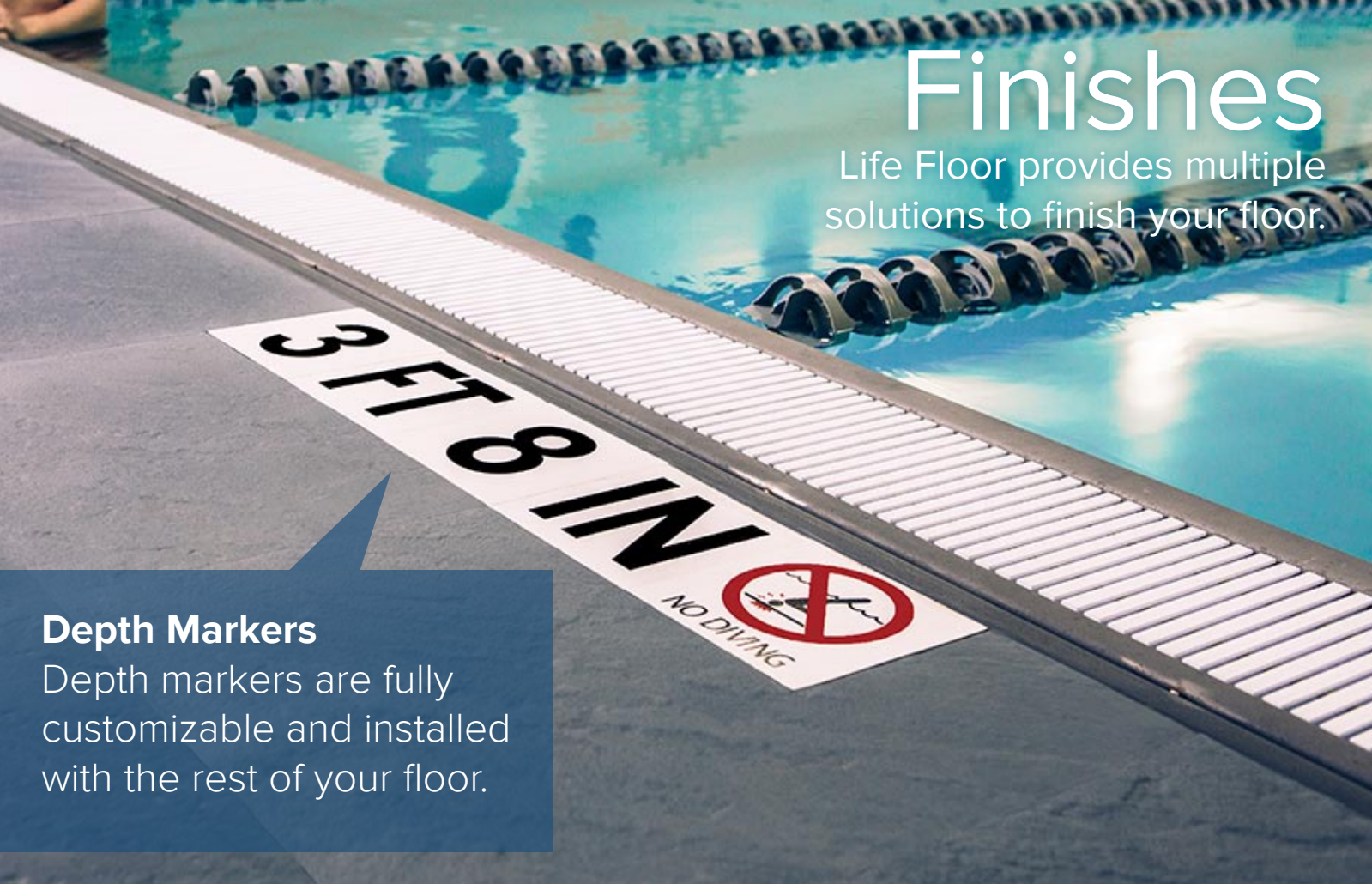
Outdoor Decks

San Diego, California

Boulevard and Bluestone Slate

Finishes

Life Floor provides multiple solutions to finish your floor.



Depth Markers

Depth markers are fully customizable and installed with the rest of your floor.



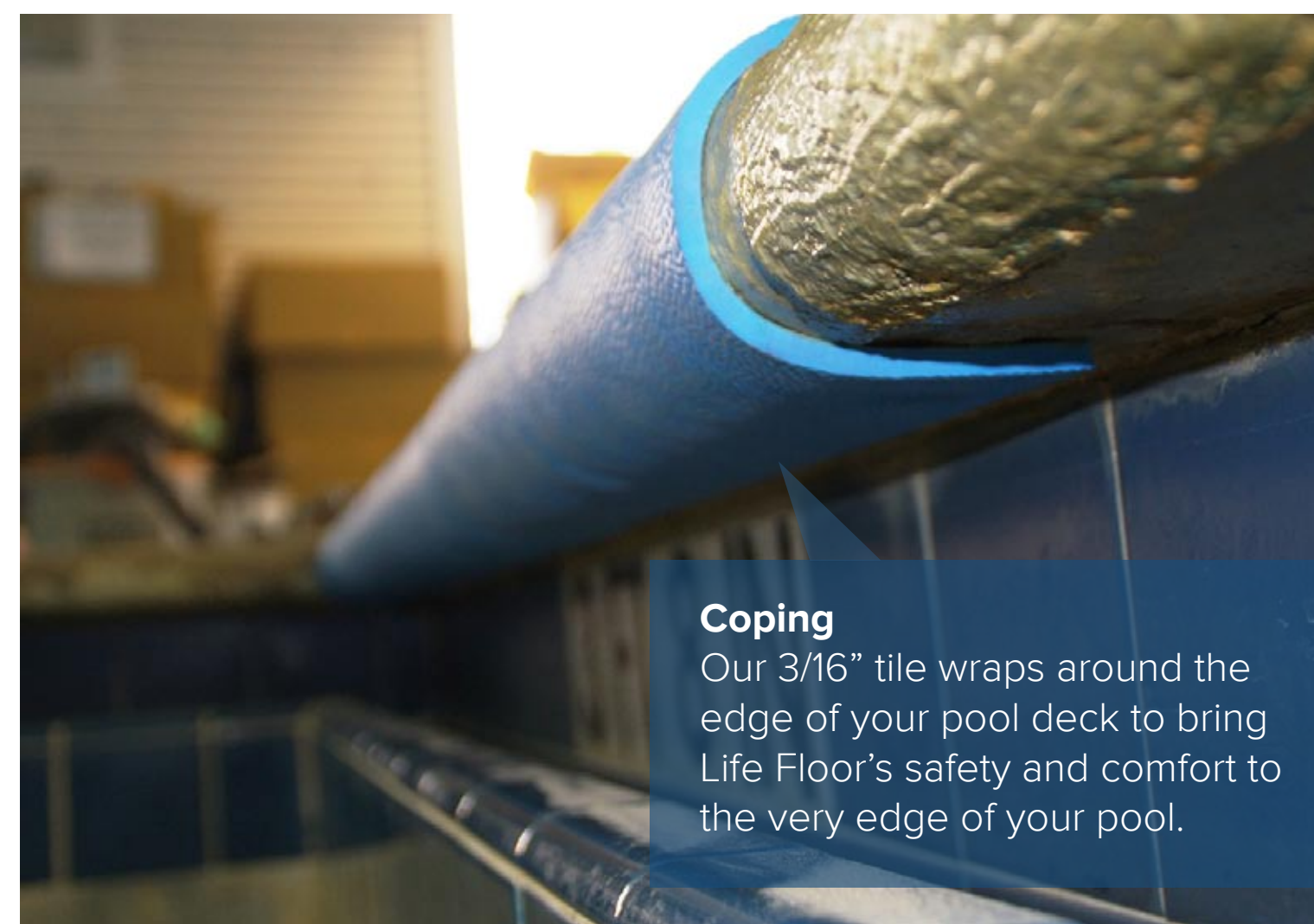
Transition Strips

When surface heights vary, our transition pieces create safer gradations between Life Floor and the substrate.



Drain Covers

Drains are easy to fit with Life Floor. We simply measure the drain, cut a piece to fit, and arc punch holes to ensure proper drainage.



Coping

Our 3/16" tile wraps around the edge of your pool deck to bring Life Floor's safety and comfort to the very edge of your pool.

Flexible Installation. Full Integration.

Life Floor can be incorporated into even the most challenging designs. Our certified installers are trained to work around drains, transitions, and other features to create a thoroughly completed look.

Bearfoot Island
Wilderness Resort, Wisconsin Dells
Bluebird, Mojave, and Sandstone
with Sepia bear claw inlays.
Designed by Life Floor.

Drains and other maintenance features are flush and fully integrated with our tiles.

Narrative design integrates the deck with both the spray features and the splash pad to enhance the park's rustic wilderness theme.

Life Floor is UV-stable, chemical resistant, and unlike other surfaces, never needs to be repainted or resealed.

Inlaid designs can be as big as your imagination and as small as your finest details.

**“It looks good,
keeps our guests safe,
is easy to keep clean,
and our staff enjoys
working on it.”**
- LHR Hospitality
Management

General FAQs	67
Installation	69
Maintenance	71
Cleaning	73
Tile Replacement	75

Technical Support

General FAQs

What is Life Floor?

Life Floor is a 24" x 24" foam-rubber floor tile that is designed for floors with predominantly barefoot traffic, especially in aquatic environments.

Why is Life Floor the best aquatic surface?

Life Floor is made with Life Floor's RepelCell™ technology, with industry-leading traction and cushioning to create a safer and more comfortable surface. Life Floor's modular tiles allow for custom designs to complement the designs of any facility. Additionally, tiles are impervious to water, dirt, and debris, allowing Life Floor to be cleaned and maintained more easily than other surfaces.

Where is Life Floor used?

Life Floor is commonly used as a surfacing product for (but not limited to) pool decks, spray grounds, locker rooms, showers, zero depth entries, and underwater applications.

Which Life Floor tile is best for my application?

Our team or dealers will help you select the texture, thickness, and appearance that work best for your facility and traction. In general, we recommend Life Floor tiles with the highest dynamic slip-resistance for areas of active play, sloped surfaces, or other applications where slip-resistance is a top concern (e.g., splash pads). We also recommend a minimum thickness of 3/8" in areas of active play for increased cushioning and impact attenuation.

What is Life Floor's fall height?

Life Floor standard thickness is 3/8", which has a fall height of 1'-0". The thicker 7/8" tiles have a fall height of up to 4'-0". You can also stack tiles to achieve higher fall heights, although this adds expense to an installation.

What is Life Floor's warranty?

For each application, Life Floor offers a 5-year warranty for normal wear and tear on 3/8" tile and a 3-year warranty on 3/16" tile. In areas of extreme traffic (250,000 annual users or more) the warranty is 2 years.

What is the lead time for new orders?

Featured products ship within two weeks as they are stocked in inventory. Non-featured (custom) products have a lead time of 90 days, but can be rush-shipped in 35 days for an additional charge.

Won't water get in between the tiles?

Short answer: Not really, but even if water does get between the tiles, it's not an issue. Life Floor has not had a single post-installation incident where a customer reported problems due to water between their tiles.

Long answer: Seams are generally tight, but water may use a seam to flow to a drain, or to temporarily rest before evaporating. For indoor installations, we recommend routine cleaning to remove water before it can stagnate. Outdoors, the water will typically evaporate before it can stagnate. We also use a contact cement adhesive that creates a waterproof barrier underneath the tiles.

Does it come in rolls?

No. Life Floor tiles are individual, 24" x 24" tiles. Tiles can be custom-cut to smaller sizes if needed. When installed, single tiles are placed individually with care, as opposed to some floor coverings that are unfurled in large, unwieldy rolls.

Individual tiles also can be removed and replaced if maintenance needs arise, which affords a facility much more flexibility over the long term.

Will Life Floor cause a tripping hazard?

Life Floor offers transition strips for 3/8" and thicker tiles. The strips are 3" by 2'-0" to provide a clean transition from an existing floor up onto Life Floor. In addition, your installer can router the edges of Life Floor to provide a more finished look.

What is Life Floor's coefficient of friction?

The coefficient of friction measured by ASTM C1028 is .92. Life Floor has also achieved the highest possible rating using other testing methods, including the British Pendulum test for dynamic coefficient of friction. You can have confidence in the superior performance of Life Floor in wet, barefoot applications compared to other flooring materials.

How does Life Floor perform in extreme heat/freezing climates?

Life Floor has installations across the United States and internationally that have withstood temperatures of -40°F to 120°F. The product has performed well in all climates. When adhered with contact cement, tiles will expand and contract with a concrete sub-base.

Will the tiles become hot?

The tiles can become warm in direct sunlight without water, comparable to concrete. In these areas we recommend our lighter colors. However, in areas that are consistently wet (spray grounds, zero-depth entries), the tiles stay relatively cool. Tiles will also cool off quickly underfoot when standing in the same place for a few seconds.

How does Life Floor perform with salt water?

The beauty of RepelCell™ technology is that Life Floor performs the same with salt water, chlorinated water, and untreated water. Salt water will not cause erosion of the Life Floor tiles.

What happens if children pick at the tiles?

The bond of Life Floor to concrete is extremely strong. A strong adult typically needs tools to remove a tile from its substrate using full body force.

What type of shoes can be worn on Life Floor?

Sneakers and other shoe types will not typically damage Life Floor Tiles, but in high shoe traffic areas, wear may accelerate. High heel shoes may cause indentations to Life Floor, but these impressions are often not visible from eye level and do not affect tile performance.

Will heavy objects damage Life Floor?

Heavy objects could leave a depression on the tile's surface. Depending on how heavy the object is and how long it was left in place, the depression should rebound over time.

Can you ride bikes on Life Floor?

Bicycle wheels are not an issue on the floor. However, the customer should be aware that if a bicycle is skidding, laying on its side, or being dragged across the floor, the tiles may be damaged by the pedals or other sharp objects on the bike.

Installing Life Floor

Life Floor has built a network of Certified Dealers and Installers that can assist you in both purchasing and installing Life Floor. For larger facilities and organizations, we also offer on-site training to enable your own staff to install Life Floor. Our flooring experts will work with you to accomplish an outstanding Life Floor installation on a timeline that accommodates your schedule.

Installation FAQs

Can you install Life Floor over compacted aggregate sub-base?

No. Appropriate substrates include concrete, new wood, plastic, metal, and fiberglass. Essentially, Life Floor requires a substrate that is: dry, well intact (not crumbling, rotting, or coming up), and cleaned of debris, dirt, oils, waxes, and sealers. If these conditions are met, then Life Floor can be installed.

What type of adhesive should be used?

A commercial grade contact cement is the best option for most applications. We have a network of distributors of this adhesive and can connect you with one or more distributors based on the project location. In low-traffic applications or as a fallback, you can use DAP contact cement from home improvement retailers.

How is the contact cement applied?

The contact cement is painted on with a paint brush or paint roller to both the sub-base material and the back of the tile, allowed to cure for 10-15 minutes depending on the environmental conditions (warmer temperatures will require less time), then the tile is placed. This offers a secure bond. If the tile fails to adhere, the installer will know immediately and will need to wait a bit longer for the adhesive to cure before the tile is placed. Read the label on the contact cement for additional instructions.

How is design work done?

Designs can be water jet cut from a CAD or vector drawing and prefabricated for quick and easy installation. Inlaid designs can also be cut and installed onsite. Generally, the installation crew cuts out the desired shapes and then inlays the void with a contrasting color. We require certified installers to perform inlaid design work. For repetitive designs (footprints, paw prints, logos), die cut shapes can also be created.

Can Life Floor be installed underwater?

Yes, Life Floor can be installed underwater and remain underwater for many years without replacement. Tiles are installed using a synthetic rubber, waterproof contact cement that can withstand underwater environments.

Can you install Life Floor over Poured in Place rubber?

It depends on the current condition of the Poured in Place (PIP). Tiles can adhere to rubber, but if the PIP is coming apart, our tiles will not have a solid enough substrate to adhere to. The longevity of the Life Floor install would be directly linked to how the PIP performs over time. Life Floor would provide a sealant for the PIP, but if the PIP starts breaking down over time, then Life Floor tiles will also become loose.

Are there multiple ways to handle drains?

For existing drains, a removable cover is developed on site to provide a consistent look. The alternative is to leave the current drains exposed. For 3/8" tile, transition edges will be necessary to slope the edge toward the drain. For 3/16" tile, transition edges are not required since there will not be a trip hazard.

Maintaining Life Floor

Life Floor requires consistent maintenance and proper cleaning. Not following these guidelines may result in damaged Life Floor or voiding of the Life Floor warranty.

Routine Maintenance

Areas exposed to only barefoot traffic can be cleaned on an as-needed basis with Life Floor Easy Maintenance Cleaners. For areas exposed to shoe traffic, Life Floor should be cleaned at least once a week. A standard cleaning schedule can be found in the Cleaning Guide. When cleaning Life Floor, use a cotton mop, cloth, sponge, a light or medium scrubbing machine with vacuum recovery, or non-metallic brushes. Stiff brushes or brushes that contain abrasives may damage Life Floor. Do not use metal brushes or grit-coated, aggressive brushes of any kind on the tile surface.

Cleaning Solutions

While most floor cleaners are acceptable to clean the surface of Life Floor tile, we recommend Life Floor Easy Maintenance Cleaners. Effective alternatives include bacteria-killing agents such as hydrogen peroxide, bleach, ammonia, or citrus. Do not use any type of sealer or wax product, as these will coat the tile surface with a slippery residue.

Preventative Maintenance

Life Floor tiles are durable and designed to withstand high volumes of barefoot traffic. However, Life Floor tiles may be scratched or cut by sharp, heavy, or abrasive objects. Should a tile become damaged, replacement is generally easy, but force will be required to remove an adhered tile. We recommend the use of plastic or natural bristle scrub brushes to clean the tile surfaces. We also recommend the use of plastic or wood furniture instead of heavy, metal furniture. Deck furniture should have wide and flat feet, or broad furniture coasters secured to the bottom of deck furniture feet. If mechanical lifts or heavy objects are to be transported or placed on top of Life Floor, it may be necessary to protect the deck surface with plywood or Masonite. Do not allow burning or extremely hot objects to come in contact with Life Floor tile. To help remind your guests about acceptable footwear and use of Life Floor, we have created signs that you may purchase upon request.

Non-Warrantable Conditions

Life Floor tiles and adhesives are warranted for up to five years, per the terms and conditions of sale. The following is a non-exhaustive list of conditions for which Life Floor tiles are not warranted: high heel damage, contact with sharp objects such as knives, scissors, metal edges, contact with hot objects such as sparks, cigarettes, hot liquids, contact with heavy machinery, and/or prolonged contact with hazardous chemicals e.g., solvents or acids.

Cleaning Life Floor

Life Floor offers a full line of cleaning supplies that are designed specifically for Life Floor tiles. Our Life Floor Easy Maintenance Cleaner suite of products includes our Peroxide Cleaner, Degreaser Cleaner, and Mineral Deposit Remover.

The Life Floor cleaning process has three easy steps: Apply-Agitate-Recover. Use our online guide found on lifefloor.com for specific cleaning guidelines and schedules.

Cleaning FAQs

How often do I need to clean Life floor?

If an area is exposed to shoe traffic, Life Floor should be cleaned on a weekly basis. If an area has only barefoot traffic (splash pads, spray parks) we recommend cleaning Life Floor on an as-needed basis. Areas with constant water flow will require less cleaning. We generally recommend using Mineral Deposit Remover once per season. In some cases, excessive use of aerosol sunscreen may need to be removed with Degreaser Cleaner on a weekly basis.

How often do I use each Life Floor Easy Maintenance Cleaner?

This also depends on the application. Each cleaner provides a different cleaning solution. We generally recommend using Degreaser Cleaner on a weekly basis to remove dirt and oil, but should be used on an as-needed basis for barefoot only areas. Peroxide Cleaner and Mineral Deposit Remover may be used on an as-needed basis.

How do I clean in between the tiles?

We recommend using our Easy Maintenance Cleaners and following the three step cleaning process of Apply-Agitate-Recover. Cleaning between the tiles is best accomplished with a pressure washer and wet vacuum.

What is the white film on the tiles and how do I clean it?

Mineral deposits can appear as a white film or even a crusty yellow coating. If mineral deposits are identified and addressed early, they are easily removed with the Mineral Deposit Remover. Follow the Apply-Agitate-Recover process to remove deposits.

Can Life Floor be permanently stained?

To date, we have not found a chemical that permanently stains Life Floor. However, Life Floor may become discolored if extremely harsh chemicals—such as muriatic acid—are allowed to sit on the tile for an extended period of time.

Are there any chemicals I should avoid using on Life Floor?

Avoid chemicals such as paint, trichloroethylene, and muriatic acid. While Life Floor is chemical resistant, solvents may attack the adhesive beneath the tiles. When using solvents to remove stains, avoid flooding butt joints with the chemicals listed above. If solvents do soak into the butt joints, clean the area with our Degreaser Cleaner and use vacuum recovery.

Solvents to avoid for contact cement: all solvents, including mineral spirits and gasoline.

How do I remove gum from Life Floor?

First apply ice to harden the gum. Once the gum is hardened, carefully lift it away with a putty knife or similar scraper. Use caution, as Life Floor can be damaged by aggressive scraping. Any remaining gum residue can be removed by applying WD-40 with a cloth.

Replacing Life Floor

Replacement is easy, quick, and economical. Should Life Floor become damaged, users are able to replace individual 24”x24” tiles instead of entire floors.

First, remove the damaged tile by lifting tile corners with a razor scraper or putty knife. Pull the tile away from the floor substrate until completely free. Next, scrape and remove any leftover adhesive from the substrate surface with a putty knife or a 4-inch razor scraper. After removing leftover adhesive, measure and, with a utility knife, cut a new Life Floor tile to the size of the replacement area. Finally, adhere tile to the substrate using waterproof contact cement found at your local hardware store. Follow the instructions on the back of the contact cement container for tile placement and adhesion process. We recommend the following adhesion process:

With a general paintbrush, evenly apply adhesive to the back of the replacement tile and to the substrate. Let both surfaces cure for approximately 10-15 minutes until the cement is tacky or slightly dry to the touch (see cement label for curing times). Begin laying down the replacement tile by aligning the new tile edge with the surrounding tile edges. Ensure each corner and edge are secure by applying pressure with your thumb and index finger. To ensure adhesive is secured to the substrate, use a floor roller to apply pressure to the entire tile area.

Technical Data

Extensive testing has been performed on Life Floor tile, including slip resistance, flame and smoke spread, water and chemical resistance, UV and Ozone stability, temperature stability, and mold resistance. Request full testing reports and MSDS online at lifefloor.com.

Traction/Slip-resistance

ASTM C1028--07 Static Coefficient of Friction: 0.92 when wet

Cushioning/Impact Attenuation

ASTM F 1292-10; Standard Specification for Impact Attenuation of Surface Systems Under and Around Play Equipment : 3/8" tile: 1'-0", 7/8" tile: 4'-0".

Water Permeability

ASTM F1551-09: Standard Test Methods for Comprehensive Characterization of Synthetic Turf Playing Surfaces and Materials: Suffix-DIN 18-035, Part 6: Water Permeability of Synthetic Turf Systems and Permeable Bases: Product will not allow vertical drainage

Flammability

ASTM E648-03 Critical Radiant Flux Class 1 interior floor finish rating
ASTM E84-04 Flame Spread Index 255, Smoke Development Index 300

Physical Properties

UV Stable, antimicrobial, closed cell, chemical resistant

© 2015 MNY Group, LLC

Life Floor is a Registered Trademark of
MNY Group, LLC. All Rights Reserved.

For more information, and for the latest
product information, always visit
www.lifefloor.com

Life Floor
A Minnesota Company

2010 East Hennepin Ave #8
Building 8, Suite 206
Minneapolis, Minnesota 55413

612.567.2813

solutions@lifefloor.com



LIFE FLOOR

Life Floor® is a registered trademark of MNY Group, LLC.
©2015 MNY Group, LLC. All rights reserved.